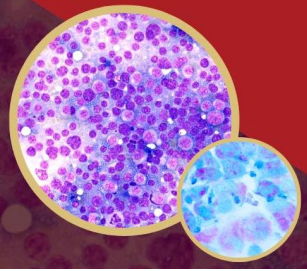


Diagnóstico
citológico de
inflamação e
infecção.
Aplicação
prática da
citologia na
patologia de pele
e ouvido.

Carla Marrinhas

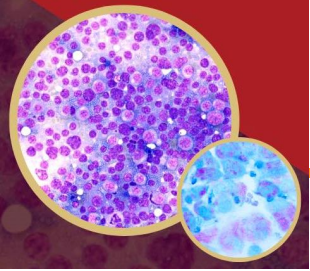
Citologia em dermatologia



Como?

Técnica de colheita
Material



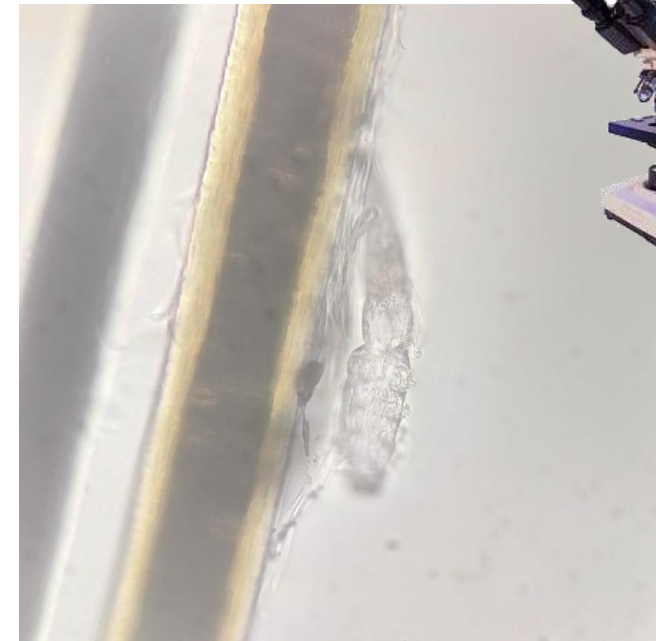
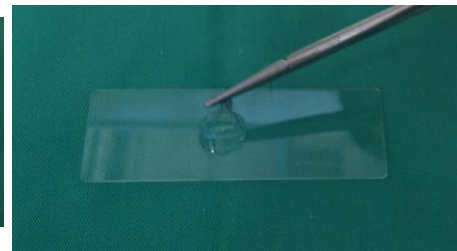
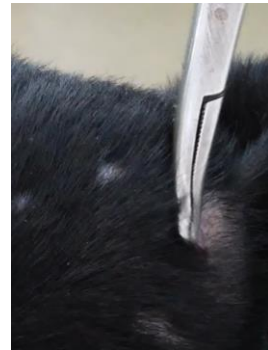
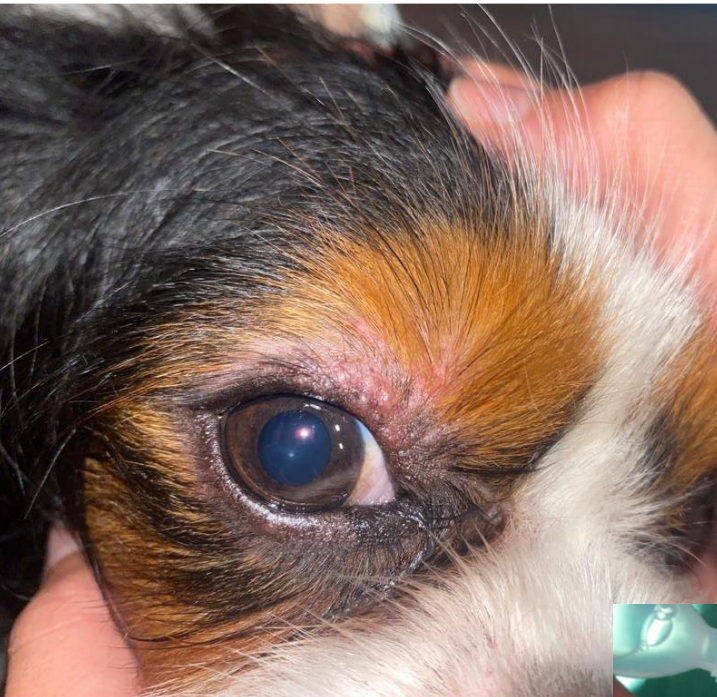


Citologia em dermatologia

Caso clínico 1

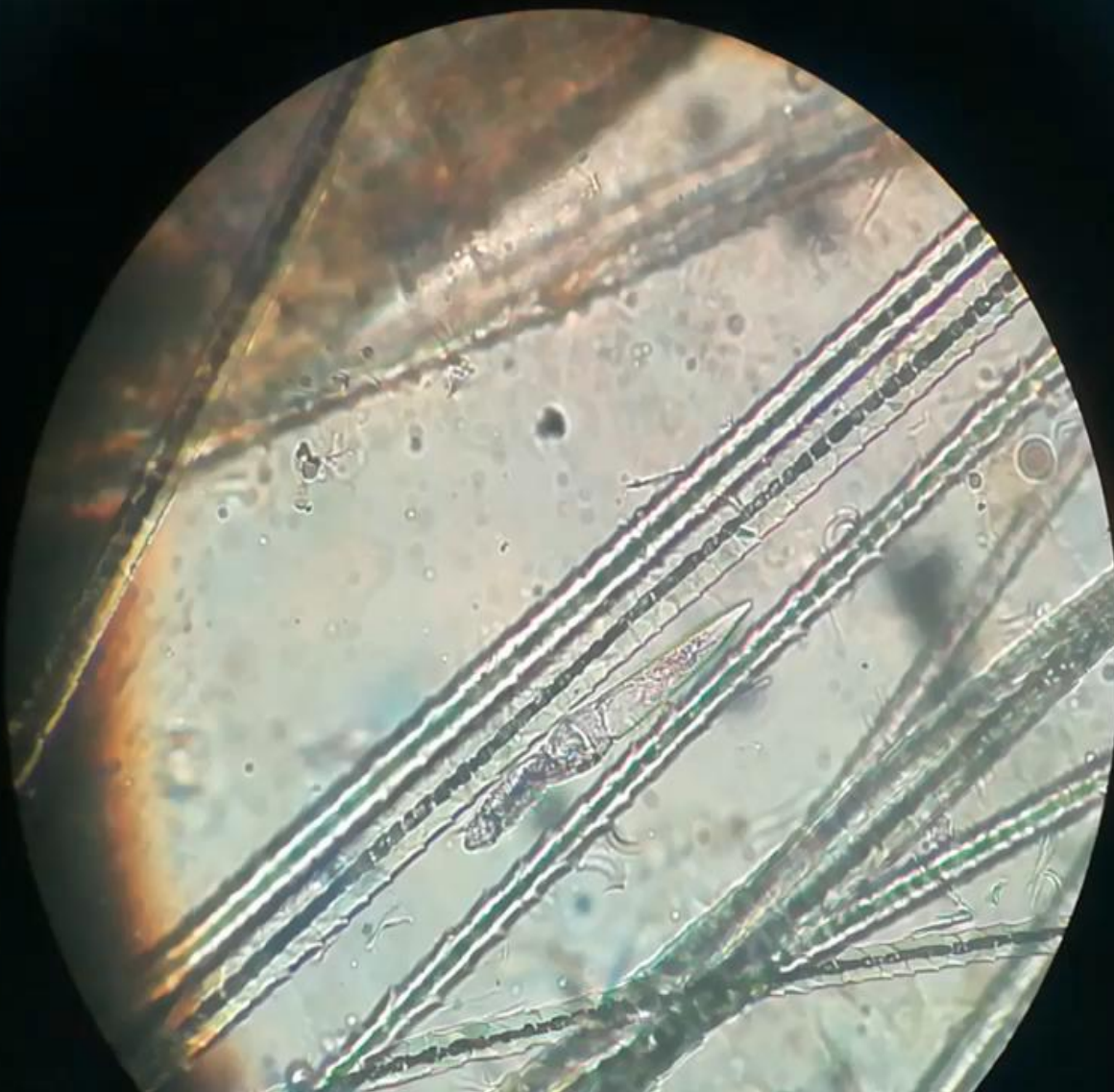
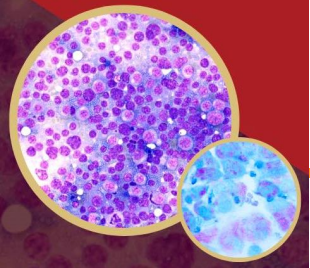
Cadela srd 9 meses com lesões de alopecia peri-ocular

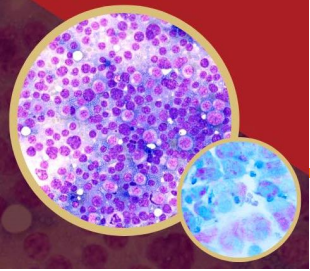
Técnica: Exame microscópico do pelo!



Demodex spp

Citologia em dermatologia

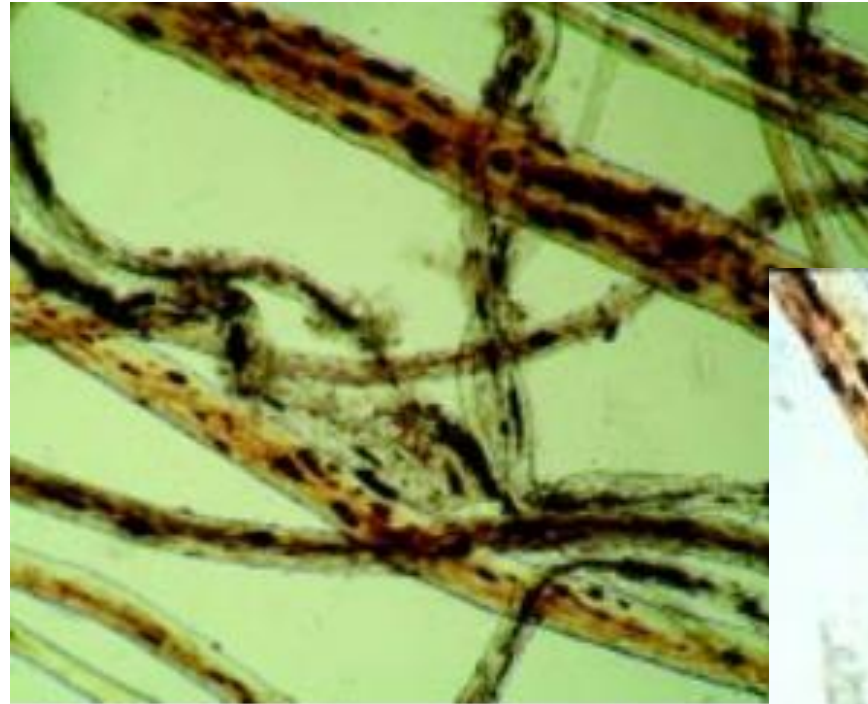
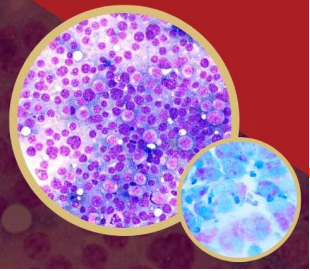


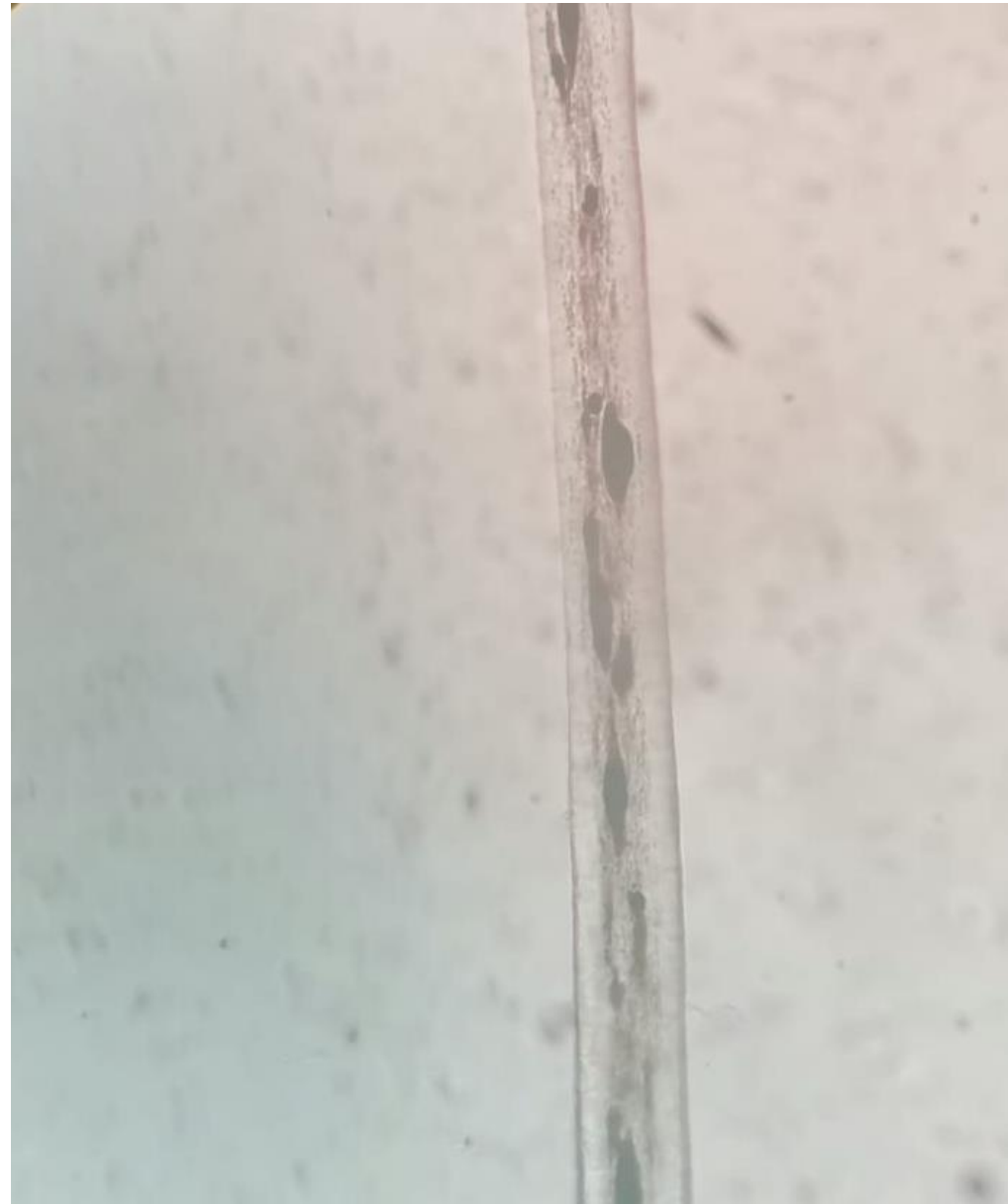
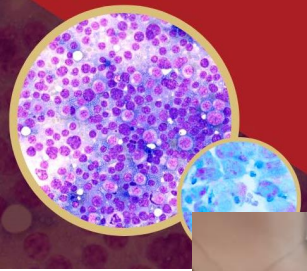


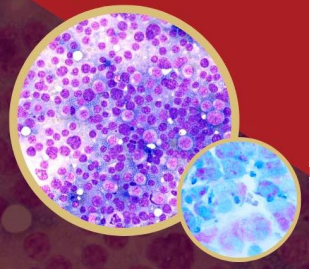
Citologia em dermatologia

Outros







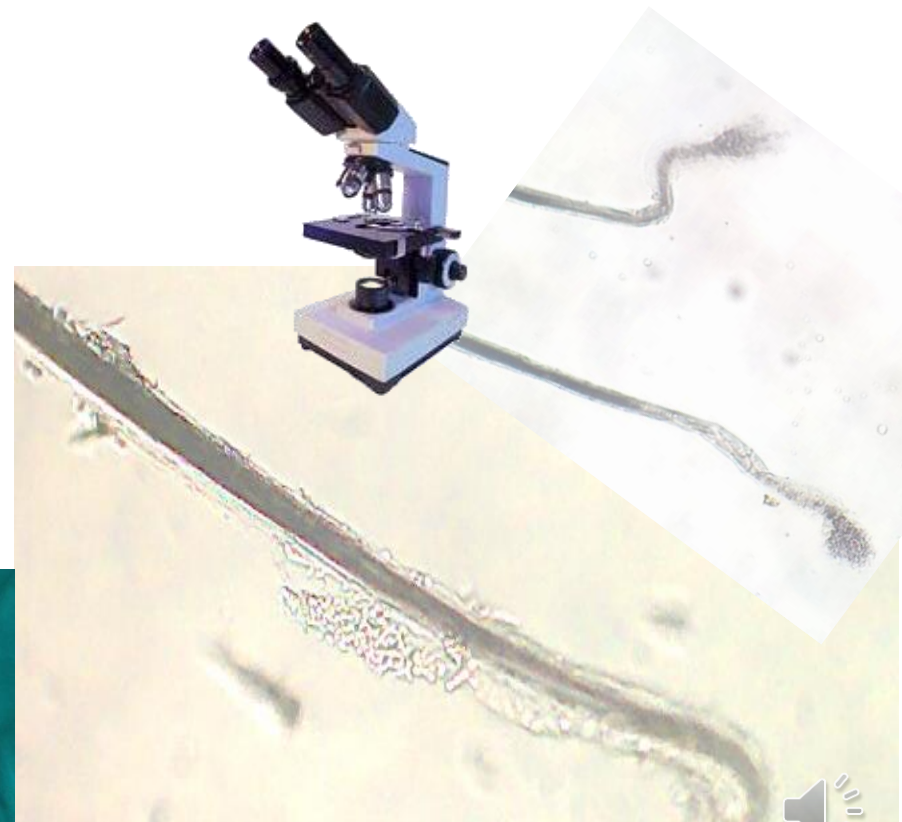
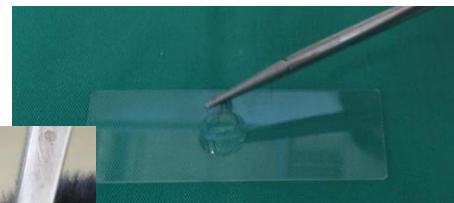
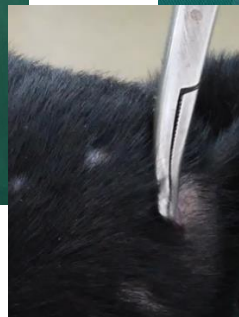


Citologia em dermatologia

Caso clínico 2

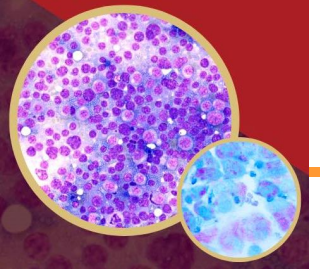
Cachorros com lesões circulares crostosas

Técnica: Exame microscópico do pêlo!

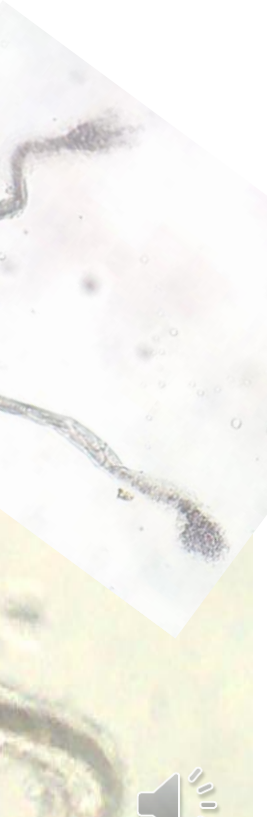


Esporos de fungos



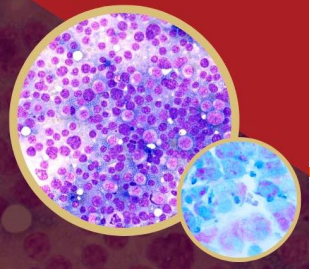


êlo!



fungos



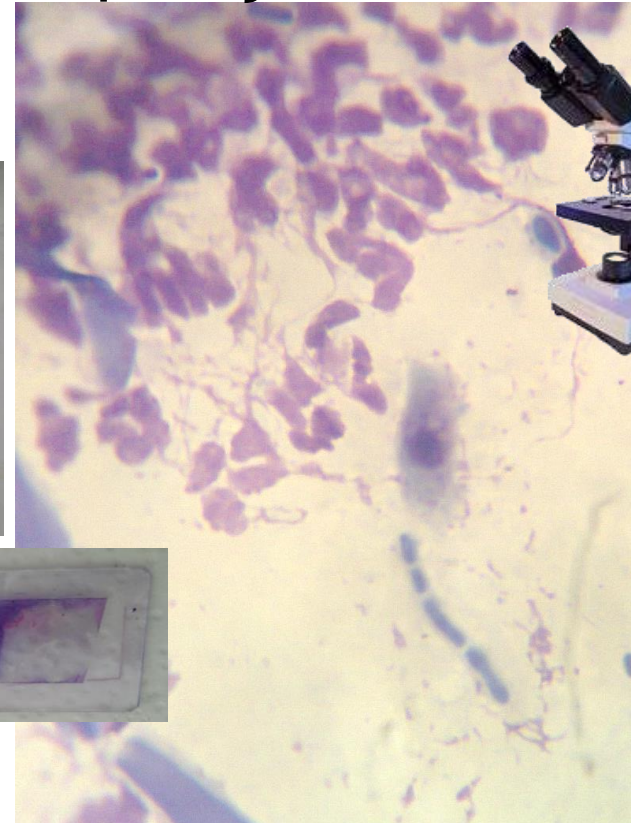
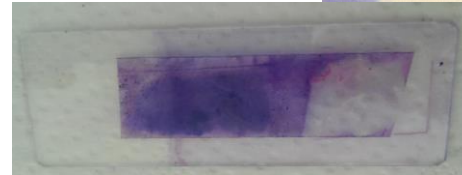
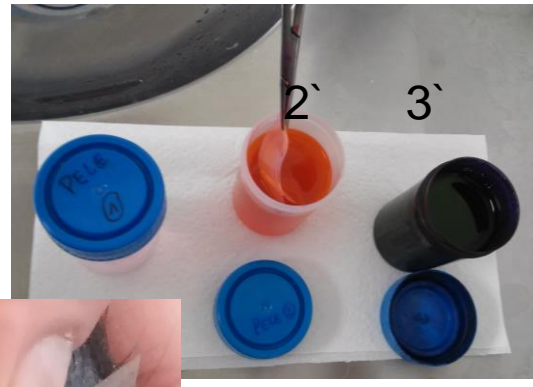
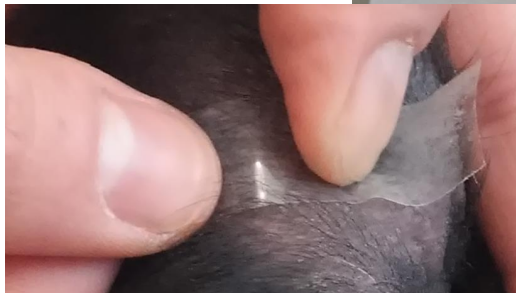


Citologia em dermatologia

Caso clínico 2

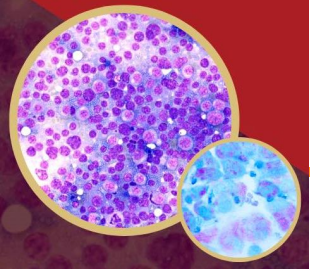
Cachorros com lesões circulares crostosas

Técnica: Citologia de Aposição com Fita-Cola



Macroconídeas
M. Gypseum (DTM)

Esporos/hifas de fungos

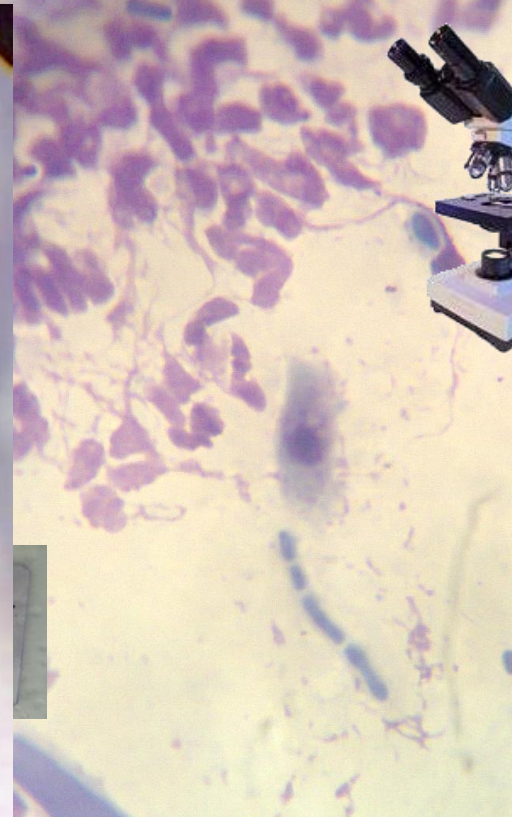
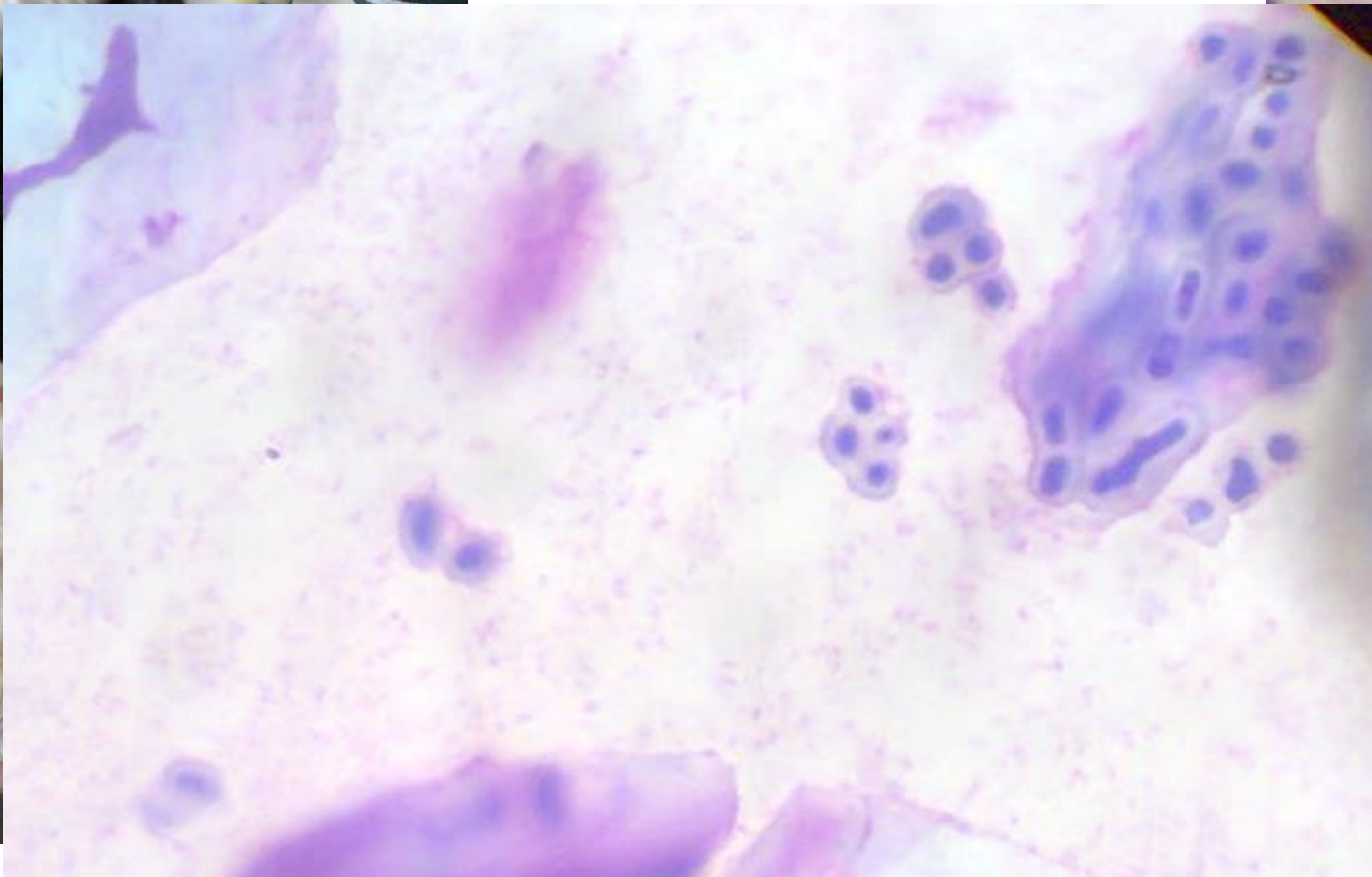


Citologia em dermatologia

Caso clínico 2

Cachorros com lesões circulares crostosas

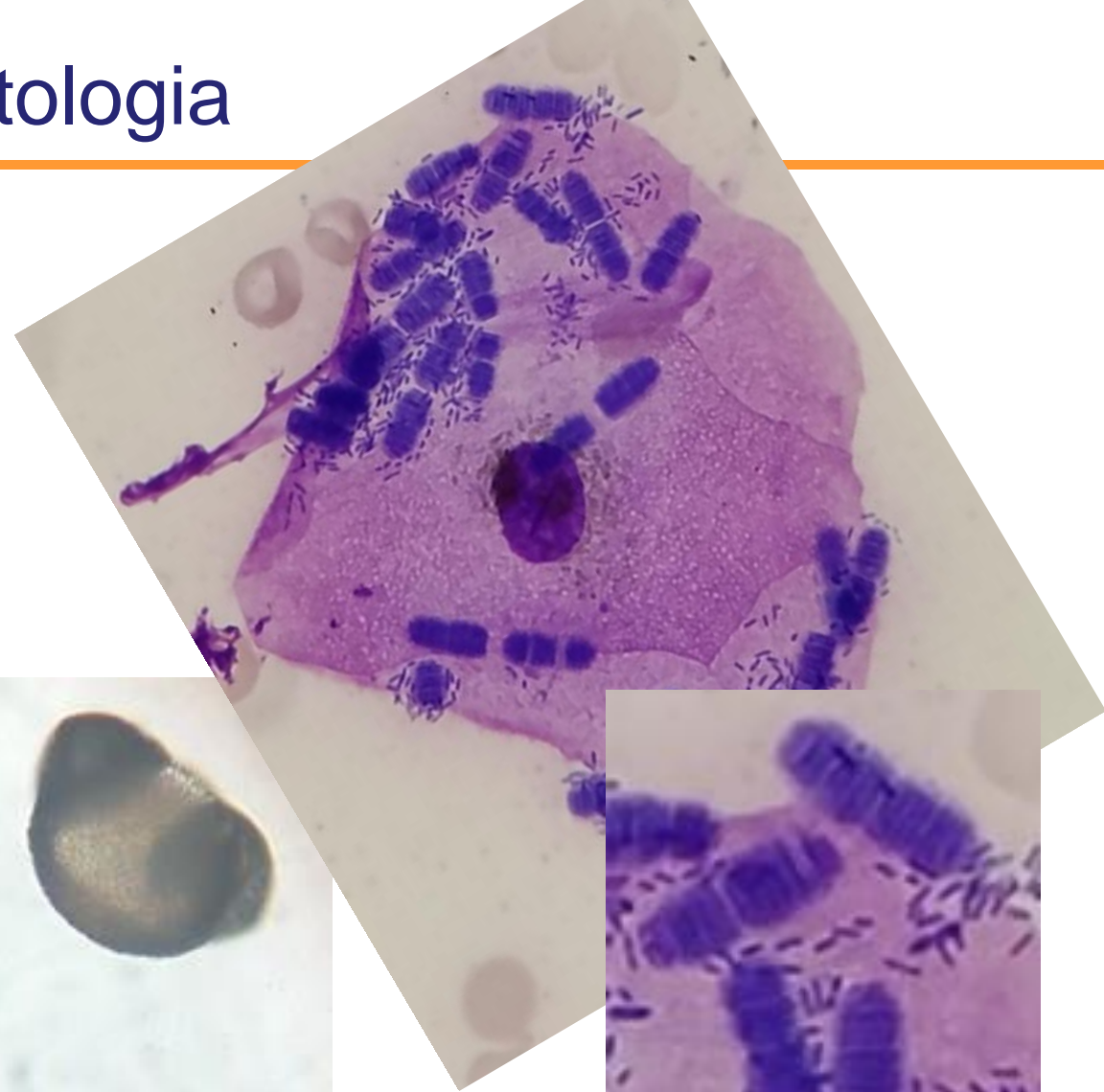
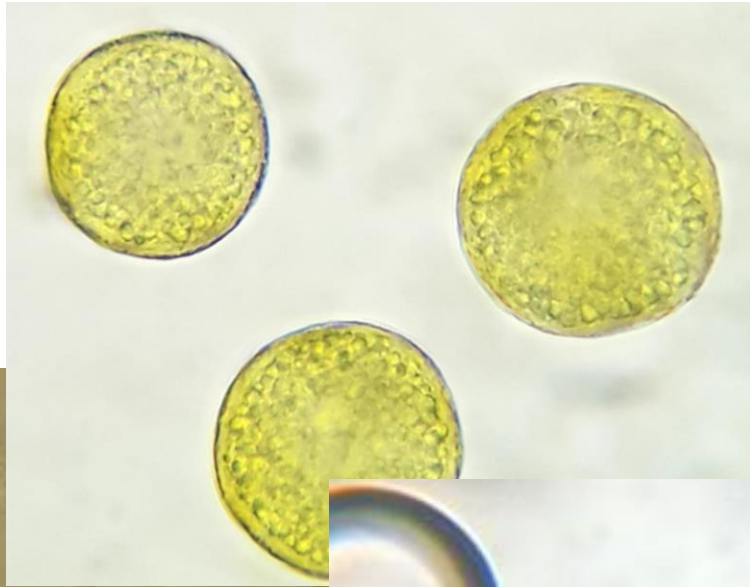
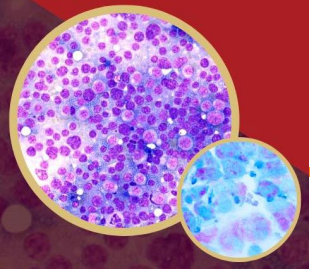
Técnica: Citologia de Aposição com Fita-Cola



Macroconídeas
M. Gypseum (DTM)

Esporos/hifas de fungos

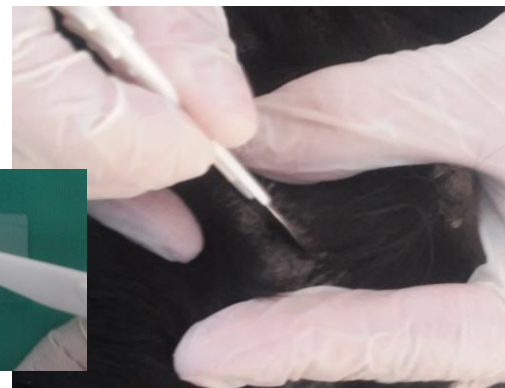
Citologia em dermatologia

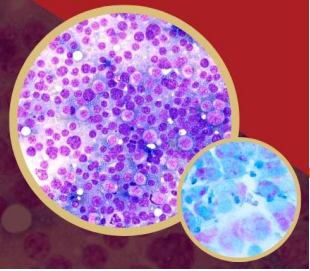


Caso clínico 3

cadela pastor alemão 4 meses com prurido VIII/X e lesões crostosas nos cotovelos e face externa do pavilhão auricular

Técnica: Raspagem Cutânea Superficial!





Citologia em dermatologia

Caso clínico 3

cadela pastor alemão 4 meses com muito prurido e lesões crostosas nos cotovelos e face externa do pavilhão auricular

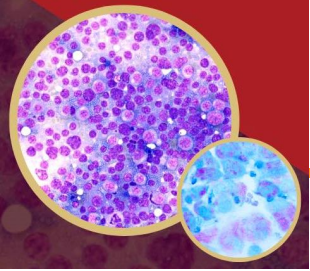


Técnica: **Aposição com Fita-Cola!**



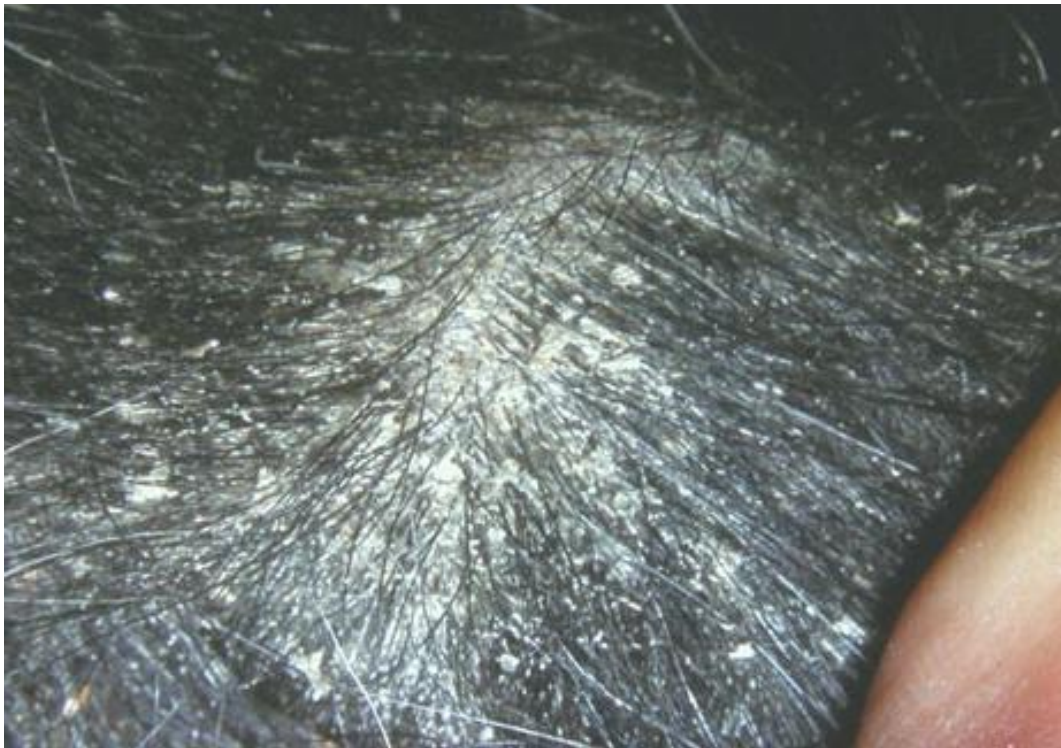
Pediculosis

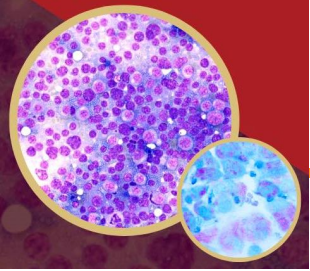




Citologia em dermatologia

Técnica: **Aposição com Fita-Cola!**





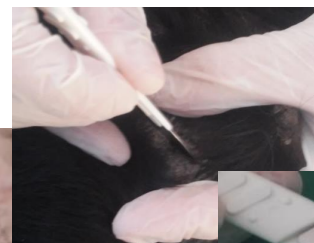
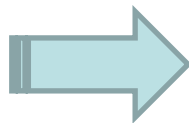
Citologia em dermatologia

Caso clínico 4

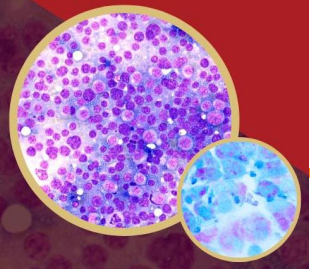
Cadela pincher 6 meses com lesões de alopecia peri-ocular e na região do peito



Técnica: Raspagem Cutânea Profunda!



Demodex spp

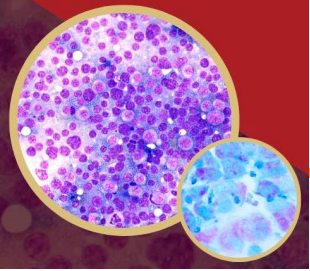


Citologia em dermatologia

Caso clínico 5

Cão macho, labrador 6 anos com dermatite atópica



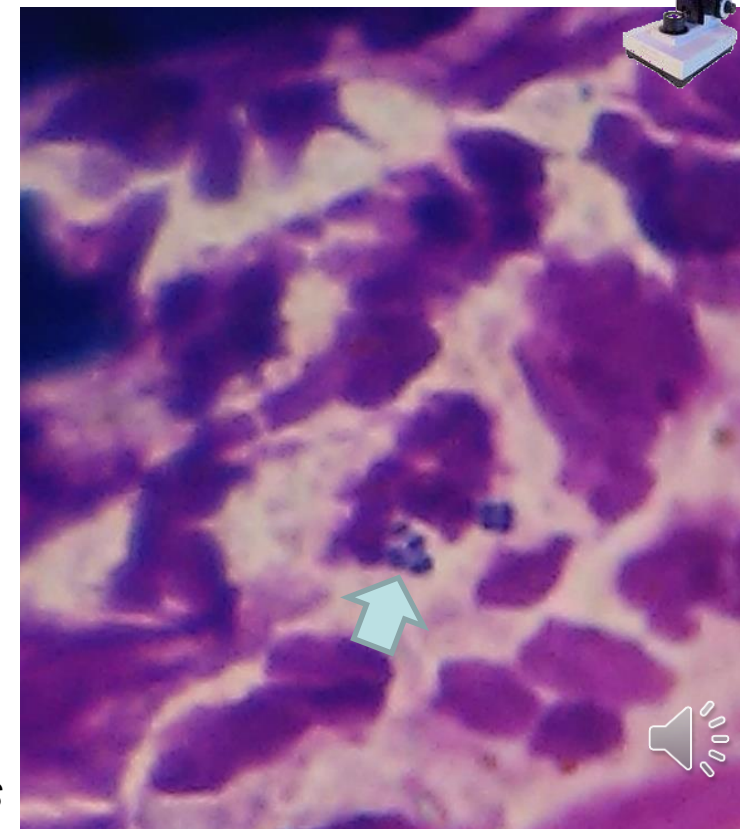
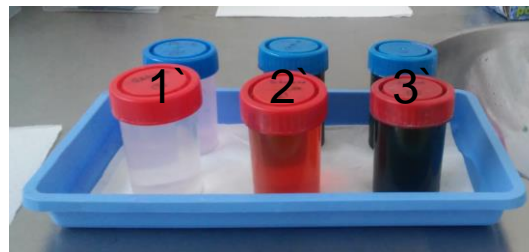


Citologia em dermatologia

Caso clínico 5

Cão macho, labrador 6 anos com dermatite atópica

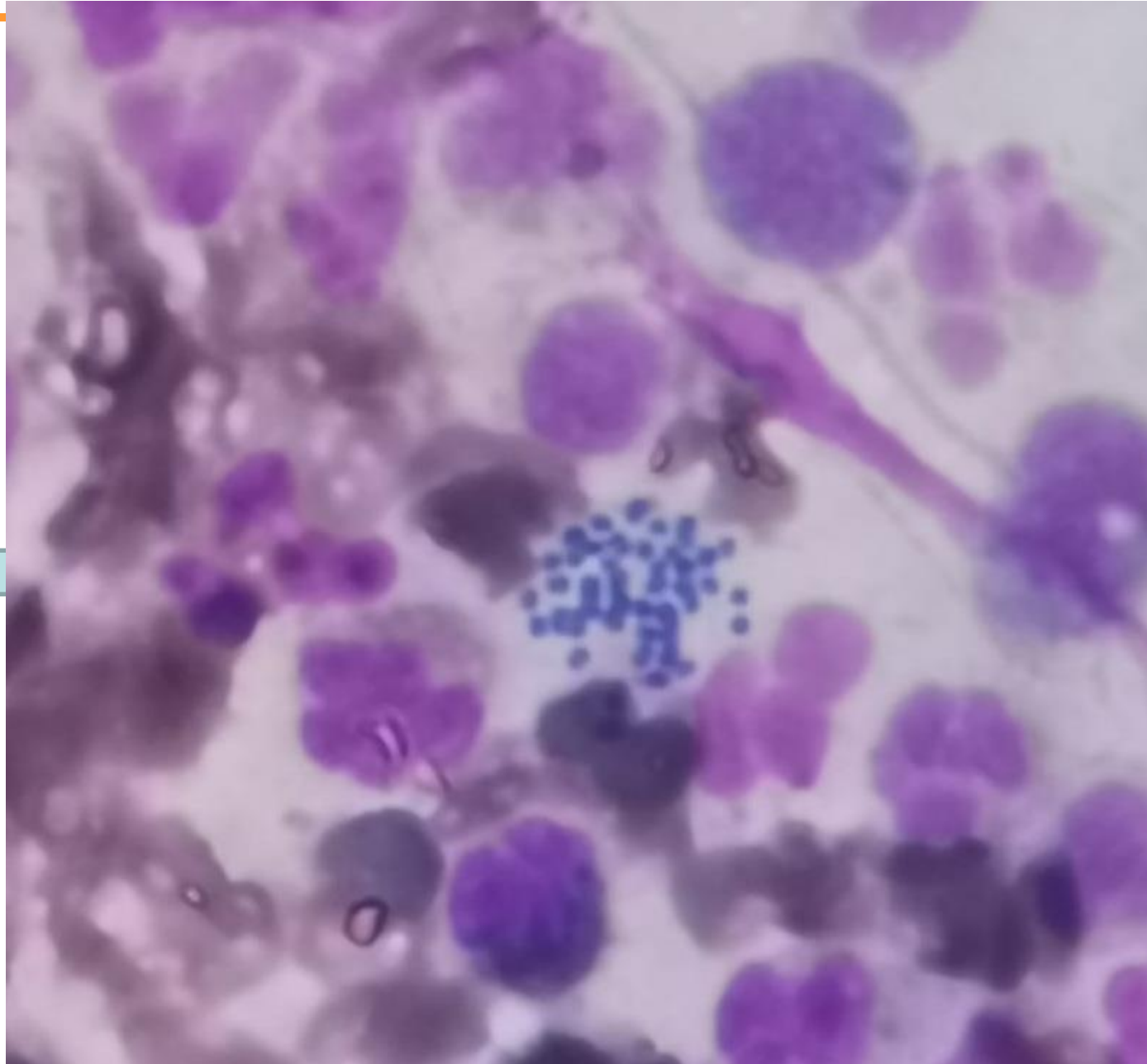
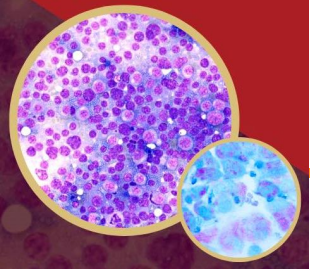
Técnica: Citologia por impressão direta



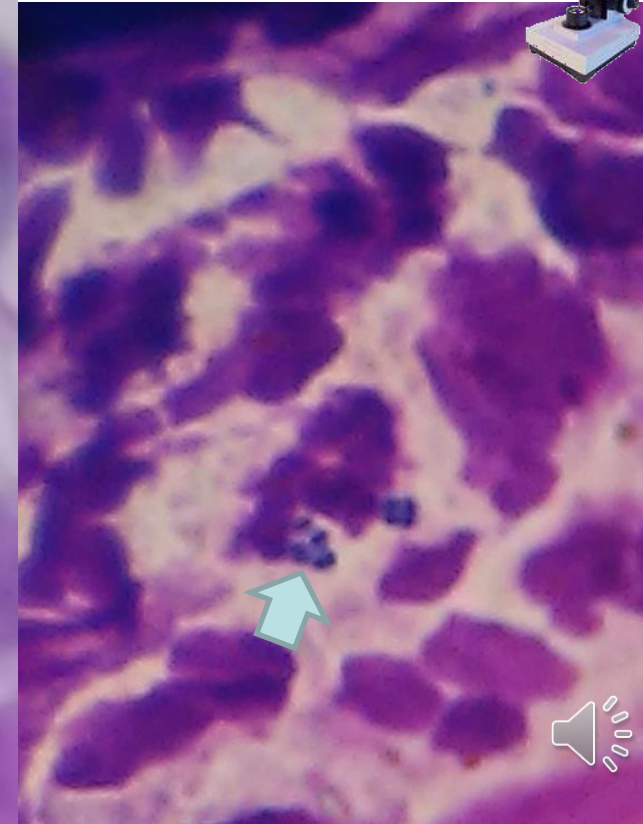
Bactérias cocos

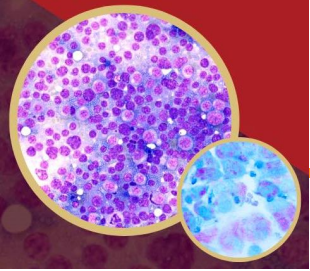


Citologia em dermatologia



pressão direta



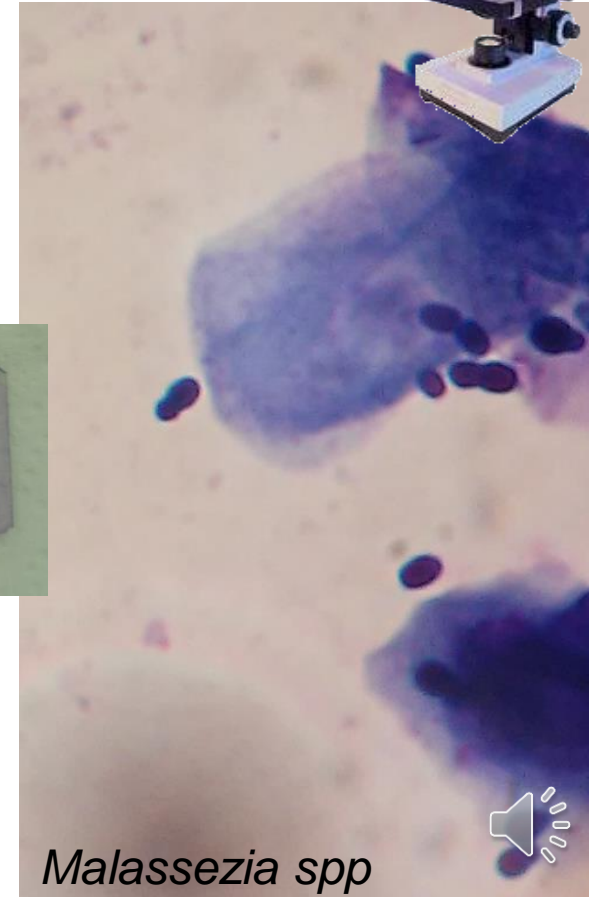
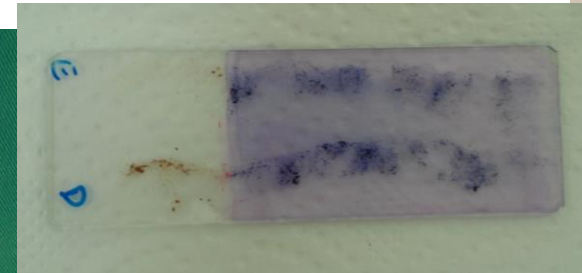
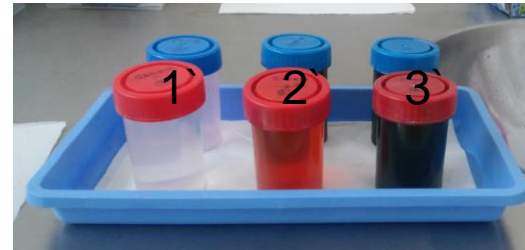
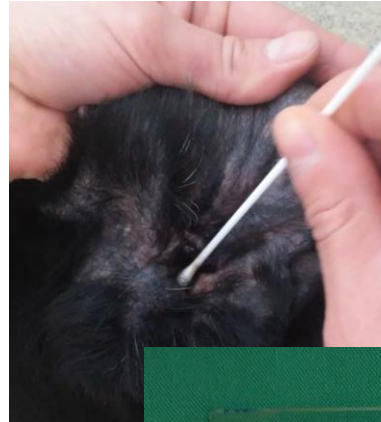
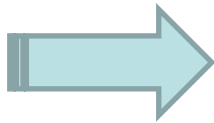


Citologia em dermatologia

Caso clínico 5

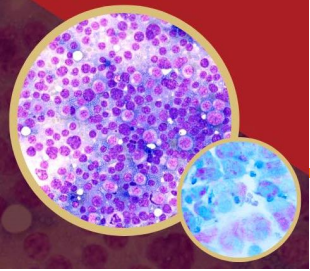
Cão macho, labrador 6 anos com dermatite atópica

Técnica: Citologia por zaragatoa



Malassezia spp

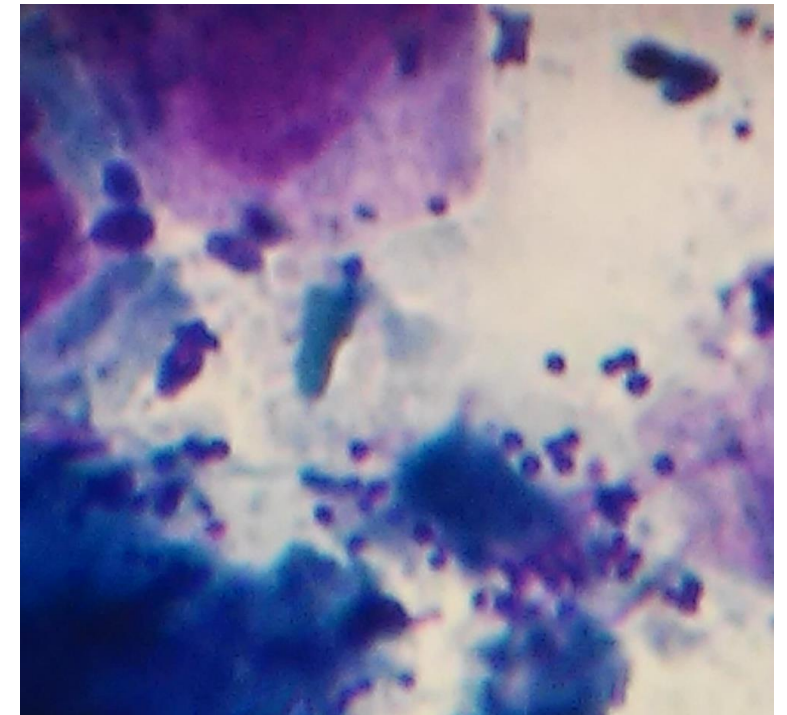
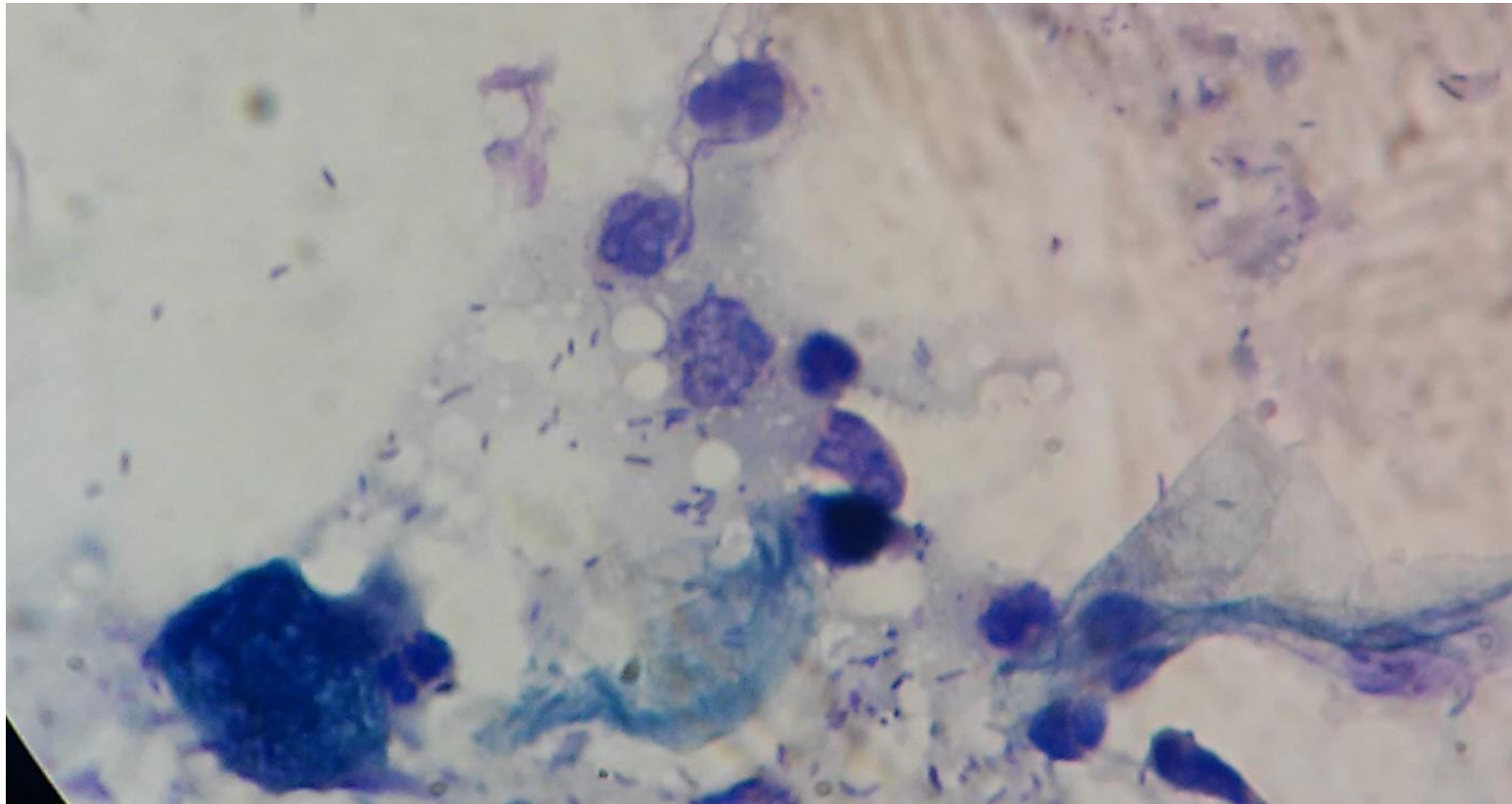


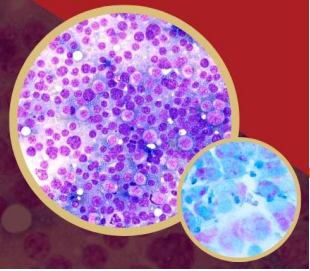


Citologia em dermatologia

Outros

Técnica: Citologia por zaragatoa



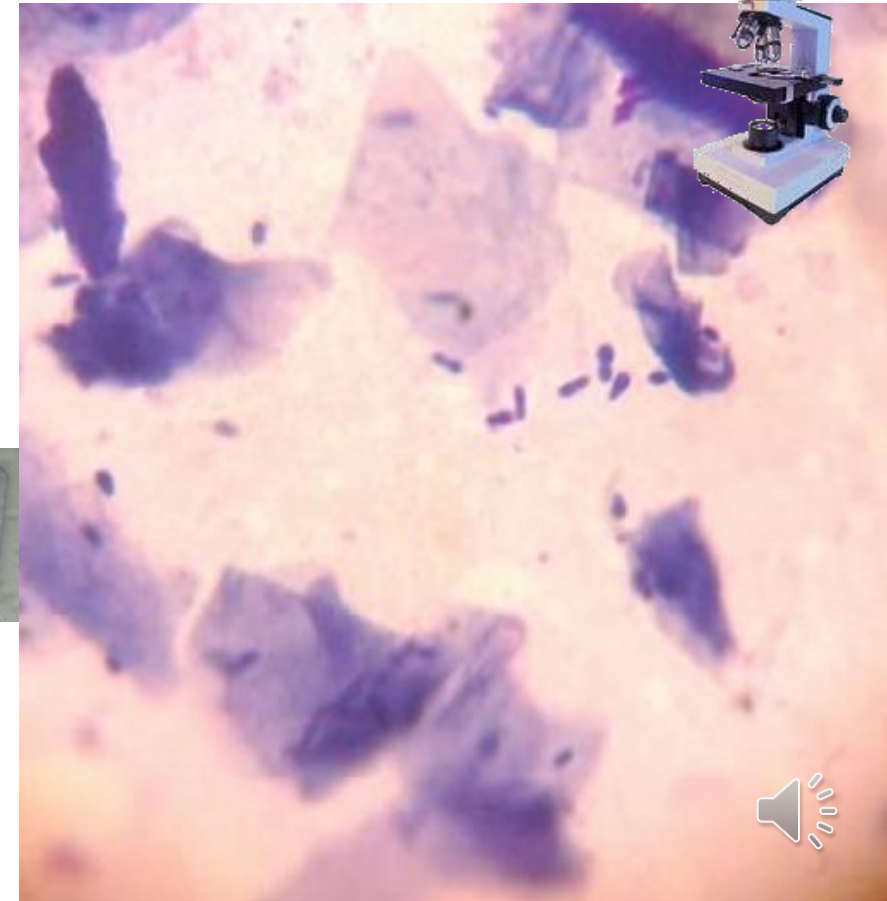
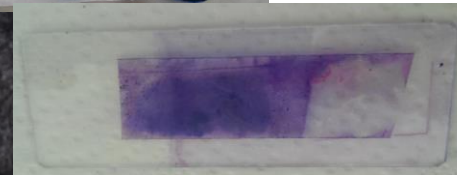
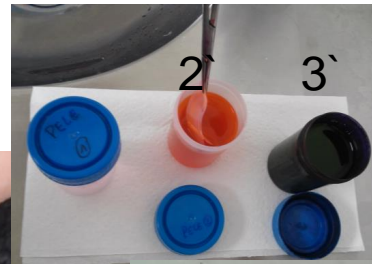


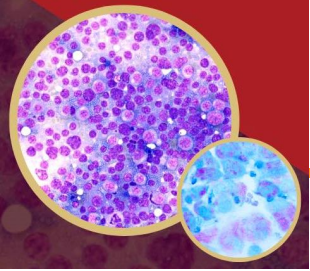
Citologia em dermatologia

Caso clínico 5

Cão macho, labrador 6 anos atópico

Técnica: Citologia de Aposição com Fita-Cola



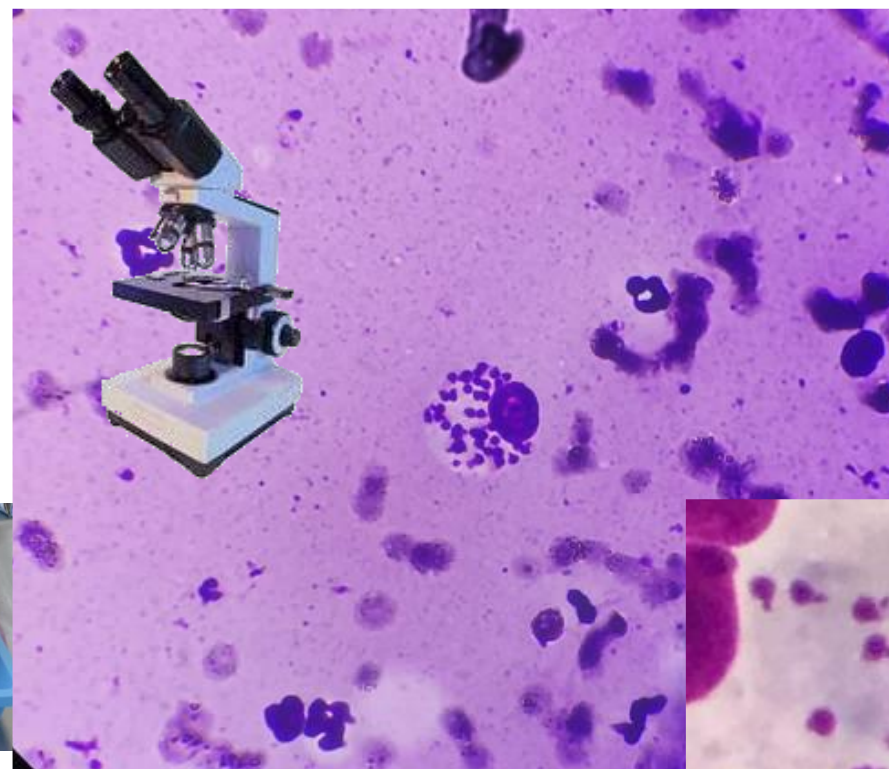
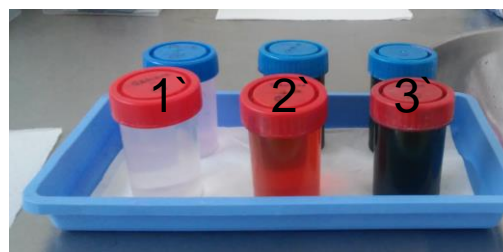


Citologia em dermatologia

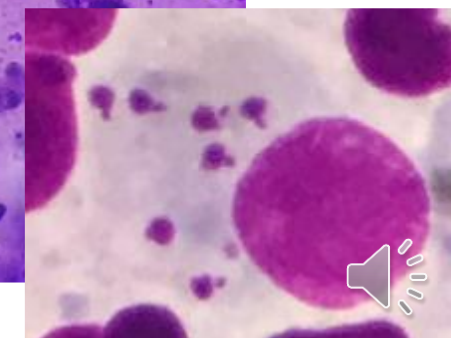
Caso clínico 6

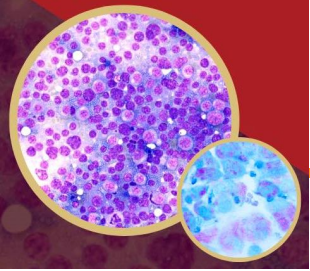
Cadela com lesão persistentes, ulcerativas, na região digital/interdigital e lesão ulcerativa na região lateral do tarso direito.

Técnica: Citologia por impressão direta



Leishmania spp

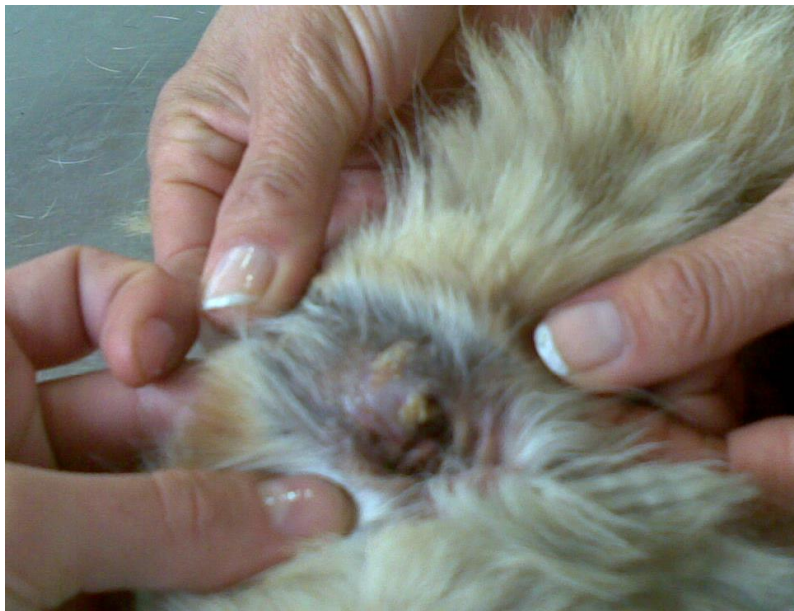




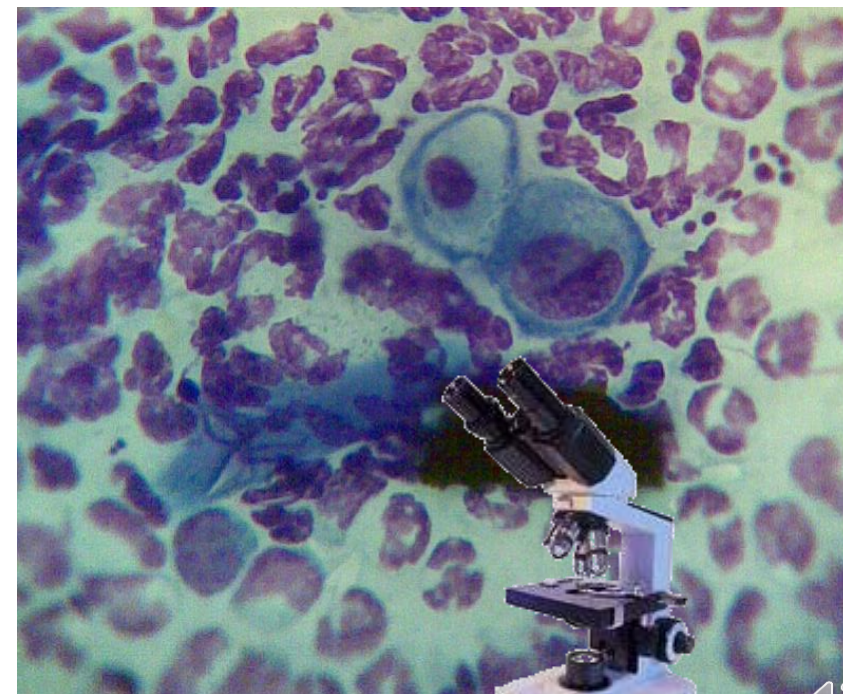
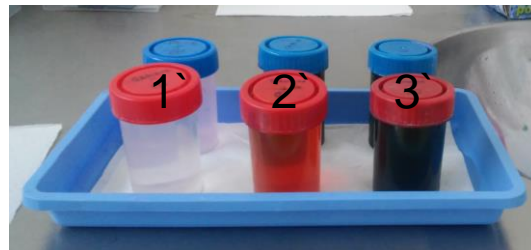
Citologia em dermatologia

Caso clínico 7

Cão, com lesões crostosas pavilhão auricular

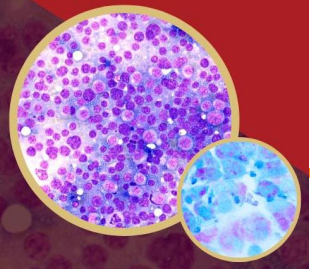


Técnica: Citologia por impressão direta



pênfigus

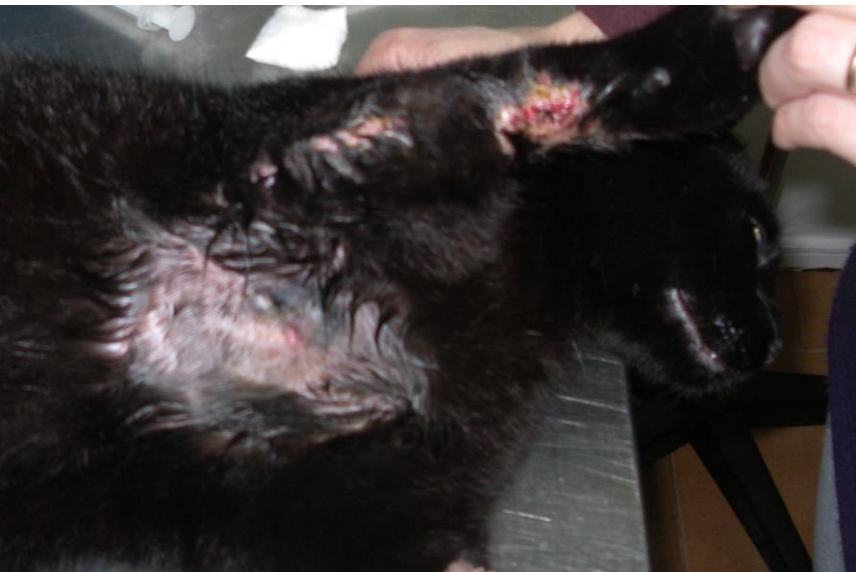




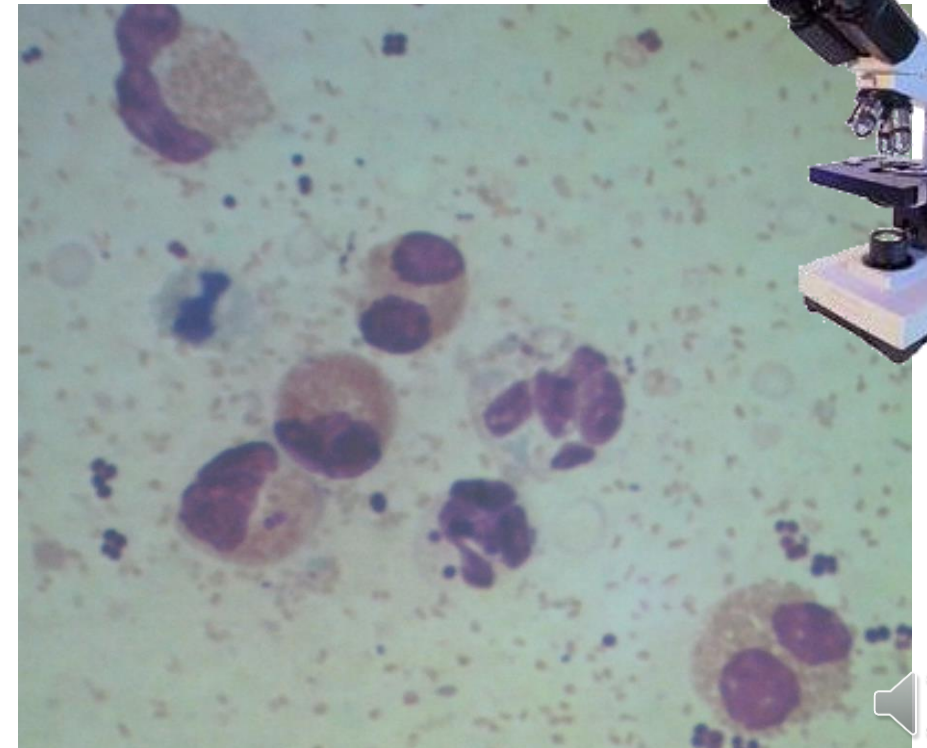
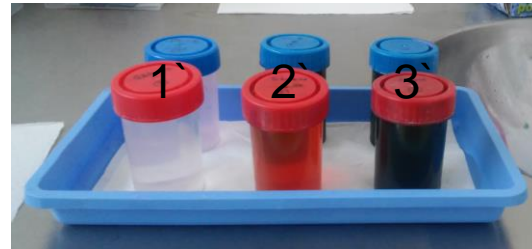
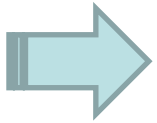
Citologia em dermatologia

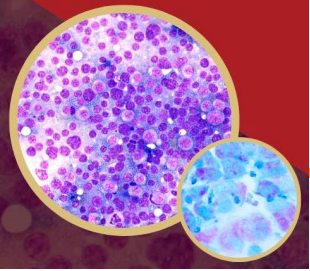
Caso clínico 8

Gato, com lesão em placa, exsudativa no membro anterior



Técnica: Citologia por impressão direta



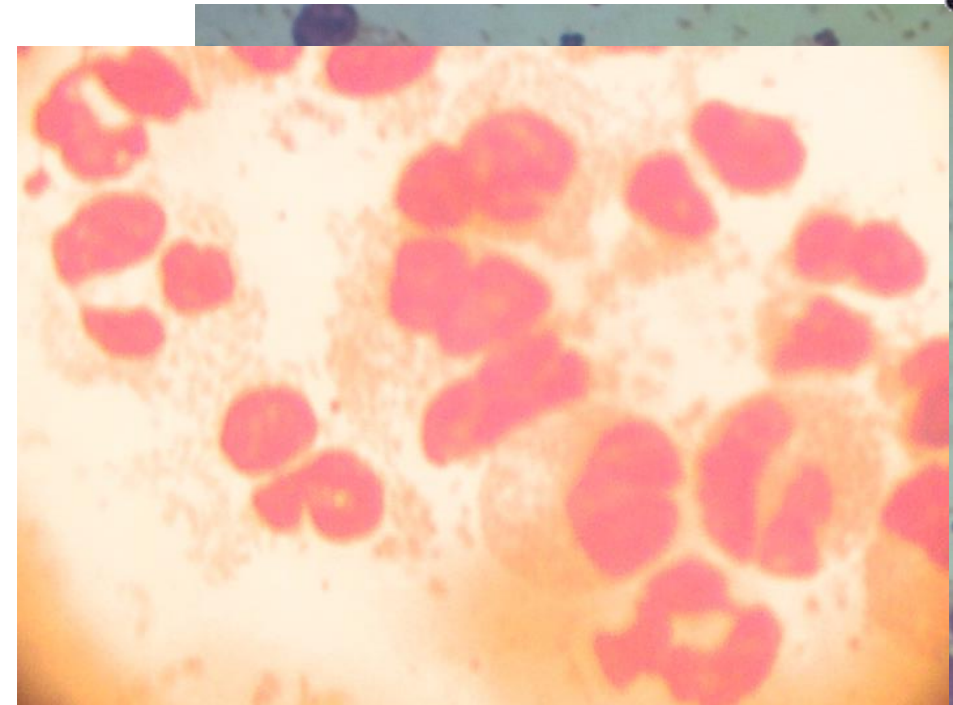
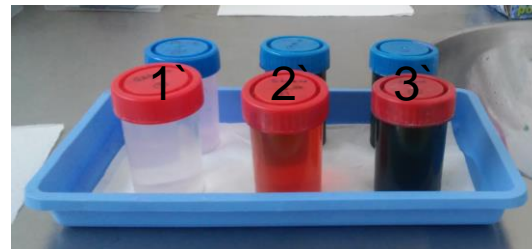
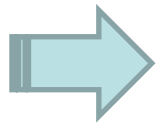


Citologia em dermatologia

Caso clínico 8

Gato, com lesão em placa, exsudativa no membro anterior

Técnica: Citologia por impressão direta





CURSO
FORMAÇÃO AVANÇADA
CITOLOGIA
2ª EDIÇÃO

 16 - 17
DEZ
09h30 - 19h00

Obrigada pela vossa atenção!

Carla Marrinhas carla.marrinhas@euvg.pt

