

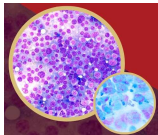
Tumores de células redondas

Marta Santos
Patologia Clínica

U. PORTO

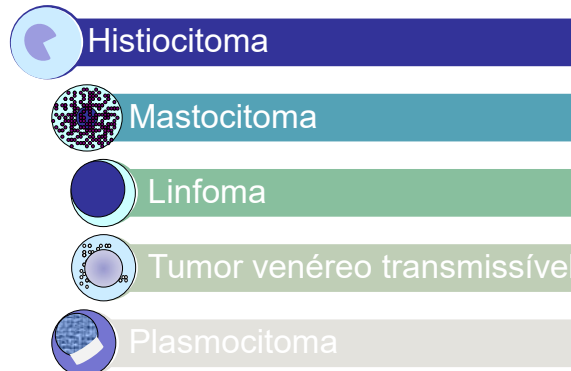
ICBAS | INSTITUTO DE CIÊNCIAS
BIOMÉDICAS ABEL SALAZAR
SCHOOL OF MEDICINE AND
BIOMEDICAL SCIENCES

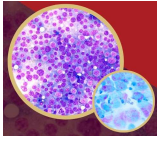
Workshop de Citologia



Definição e subtipos

- células isoladas
- forma arredondada
- limites celulares distintos (*discrete cells*)

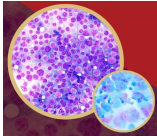




Importância do diagnóstico citológico

- Citologia – permite o diagnóstico (regra geral)
- Histopatologia – confirmação; definição grau (ex. mastocitomas); avaliação das margens de excisão

CRITÉRIOS DE MALIGNIDADE



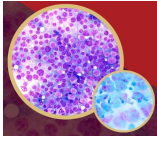
Histiocitoma – clínica

- cutâneo, benigno, típico de cão jovem (<4 anos)
- ocasional em cães + velhos
- características macroscópicas peculiares: crescimento rápido, cabeça e extremidades



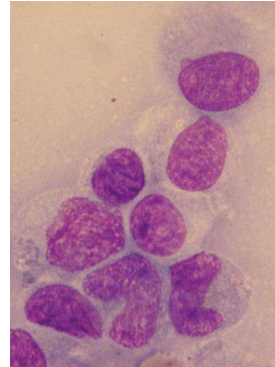
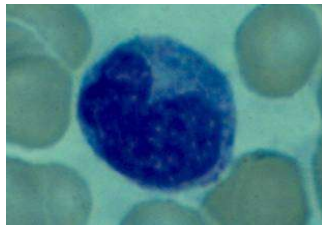
→ **nódulo exofítico, bem delimitado, ulcerado, hiperémico**



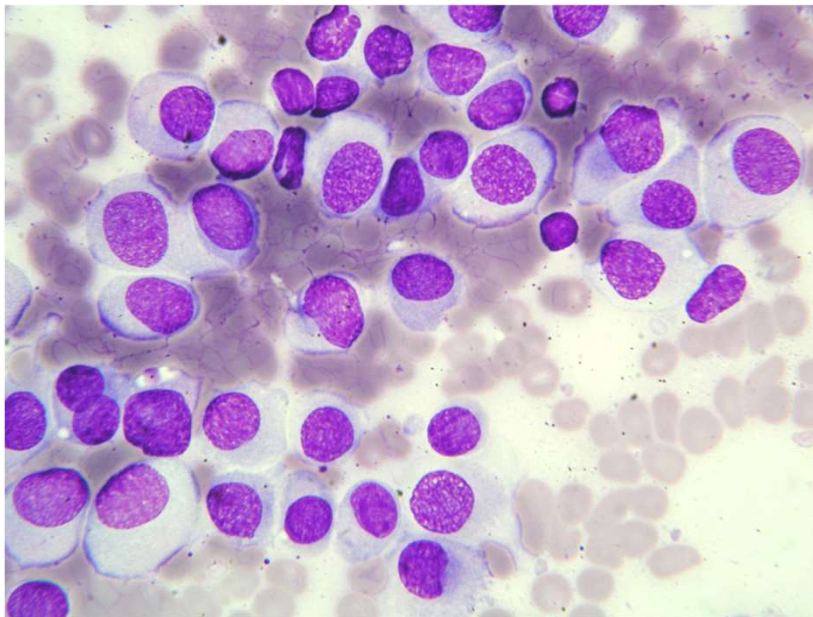


Histiocitoma – citologia

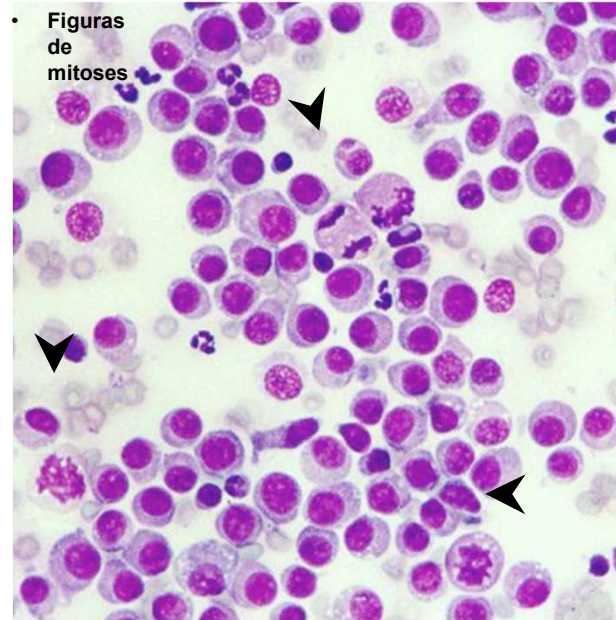
- células redondas, ovais; limites nem sempre distintos; moderada quantidade de citoplasma claro, vacúolos
- núcleo redondo a reniforme; binucleadas; nucléolos não visíveis ou 1 por célula



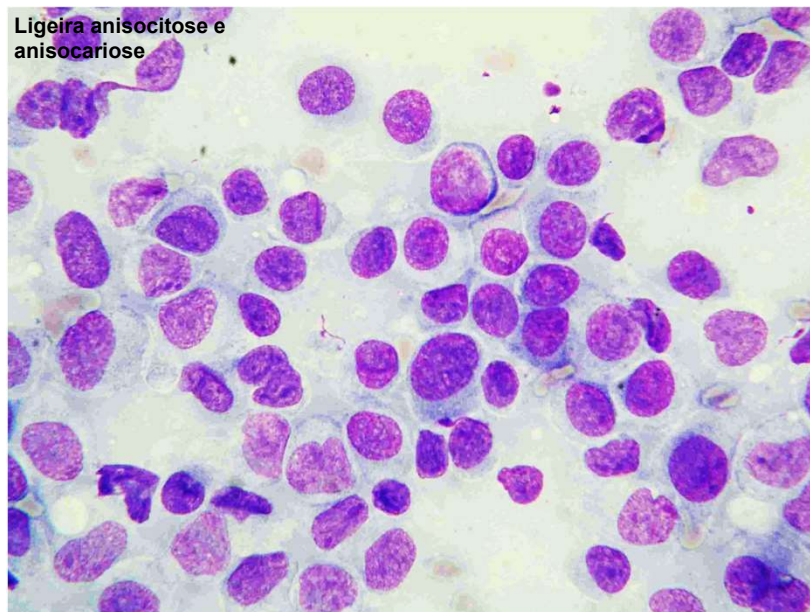
→ Histiocitoma



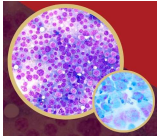
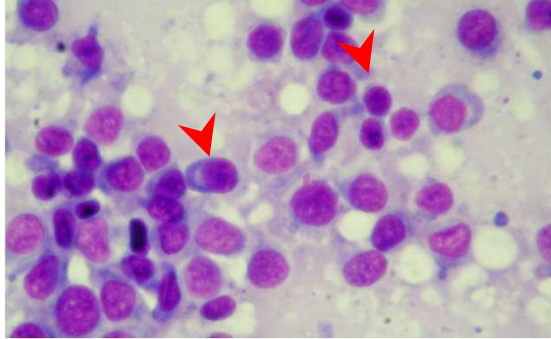
→ Histiocitoma



→ Histiocitoma

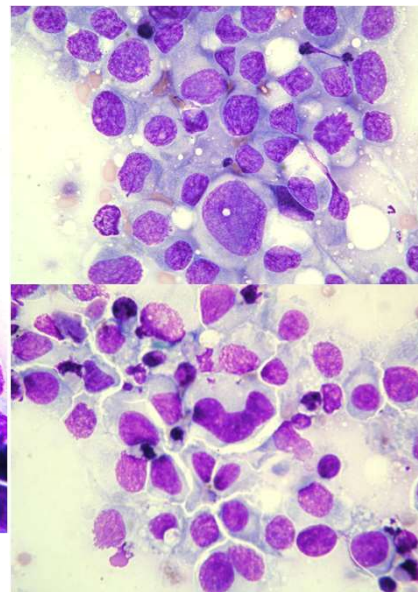
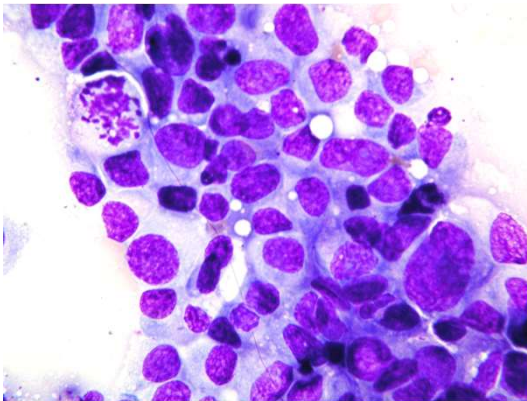


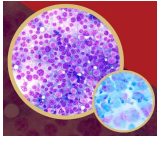
→ aparecimento de linfócitos e plasmócitos (regressão espontânea em ≈3 meses)



Outros tumores histiocitários

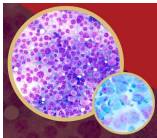
- Histiocitose maligna
- Sarcoma histiocitário





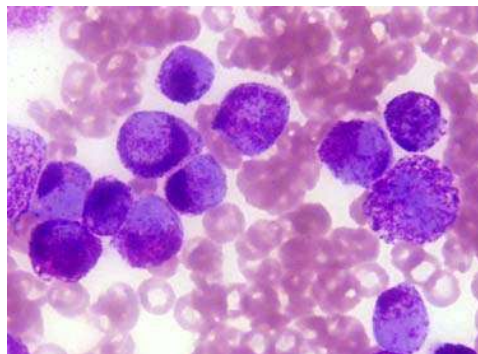
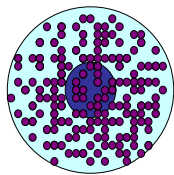
Mastocitoma canino - clínica

- cutâneo ou subcutâneo, frequentes (10 a 20%) no cão (**Boxer, pugs, Labrador retriever, bull terriers**)
- apresentação clínica muito variável



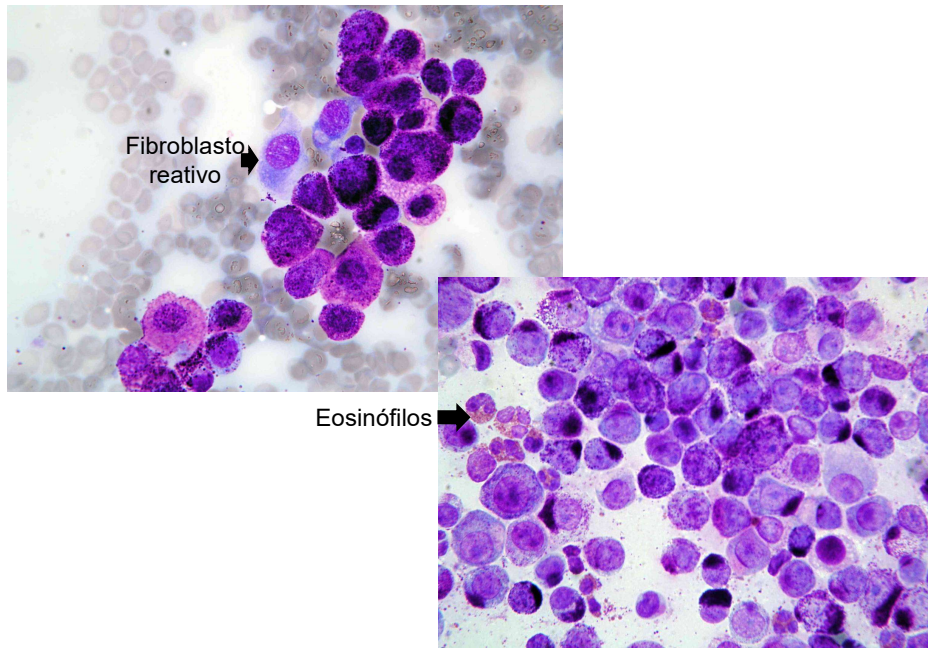
Mastocitoma canino - citologia

- população com predomínio de mastócitos (atenção mastócitos não é = mastocitoma! Quadros inflamatórios com mastócitos)



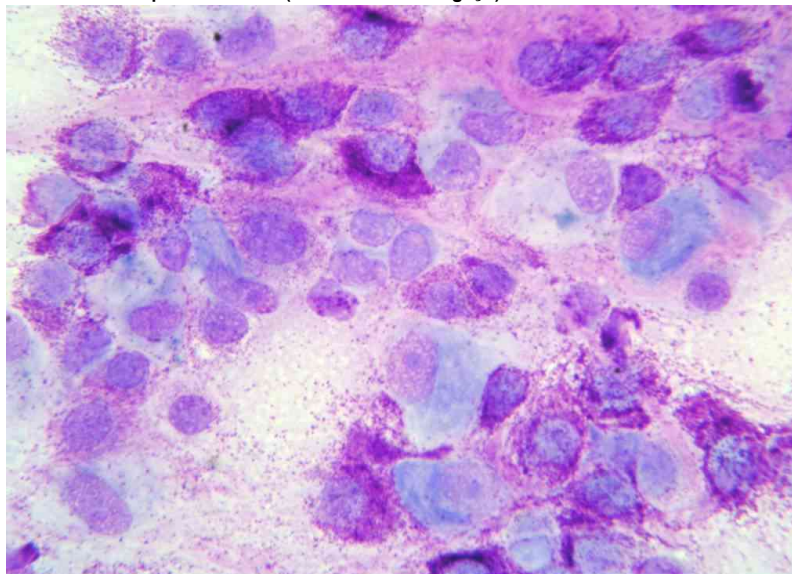
- Quantidade de granulação – avaliar diferenciação
- Nível de anisocitose e anisocariose

→ Mastocitoma

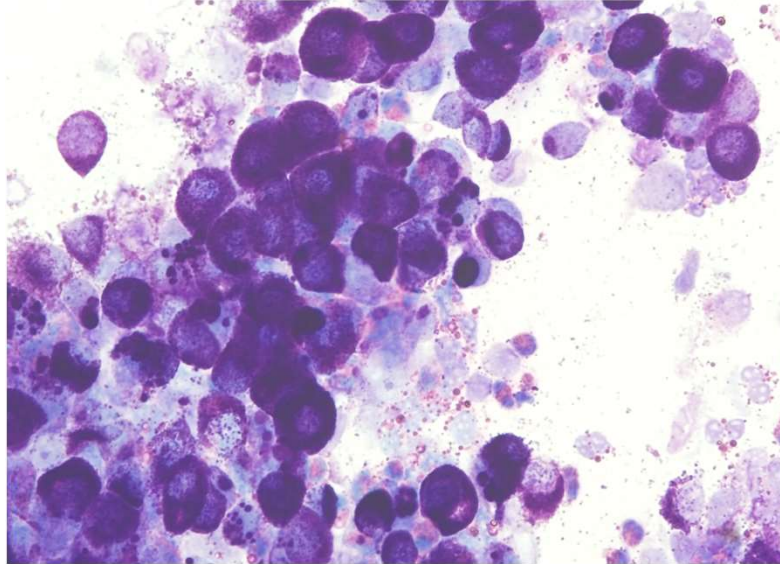


→ Mastocitoma

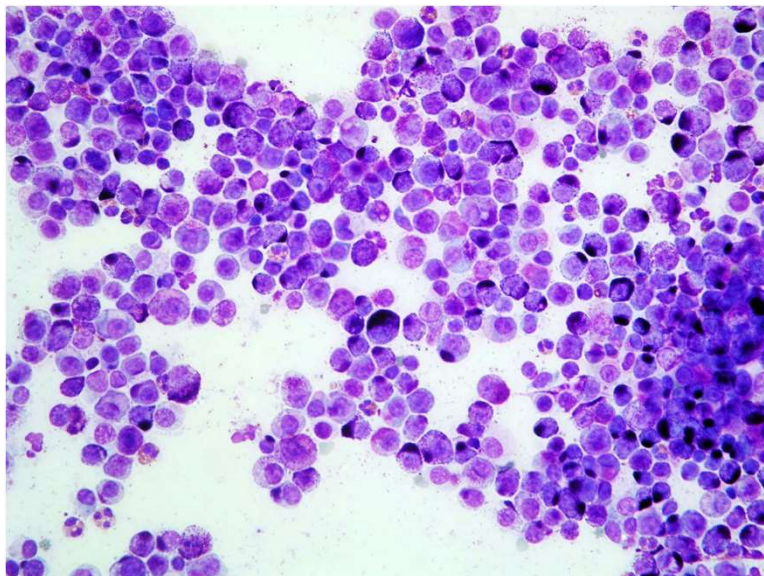
↳ Grânulos em pano de fundo (resultado do esfregaço)



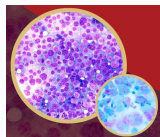
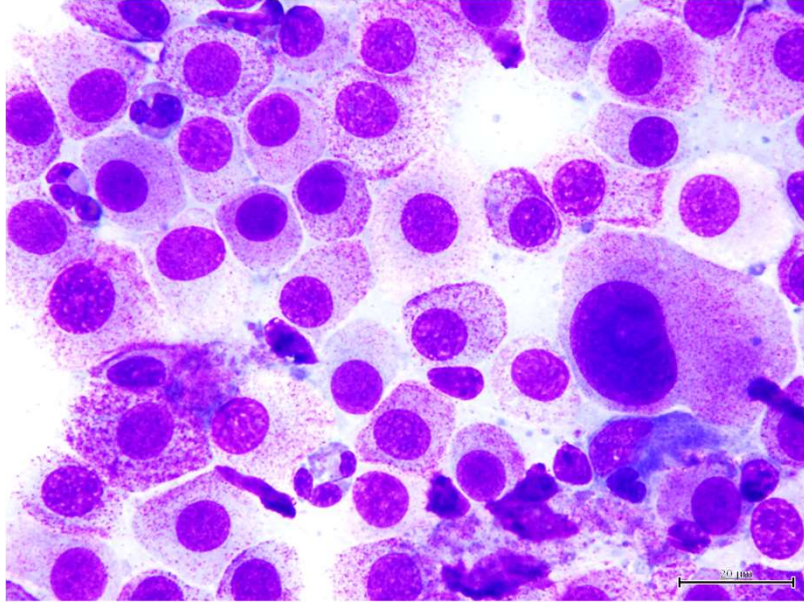
→ Mastocitoma bem diferenciado



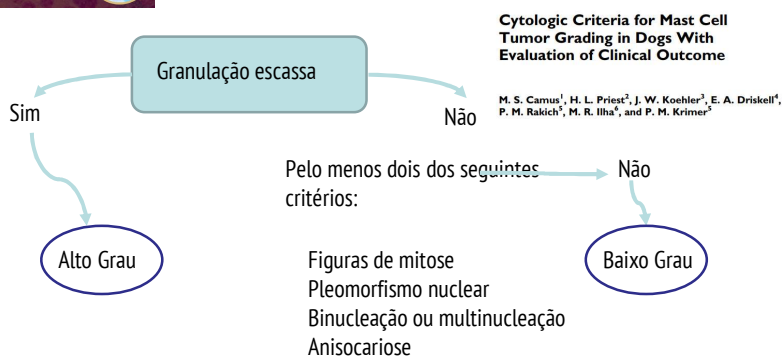
→ Mastocitoma moderadamente diferenciado



→ Mastocitoma pouco diferenciado

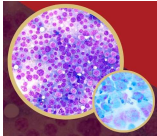
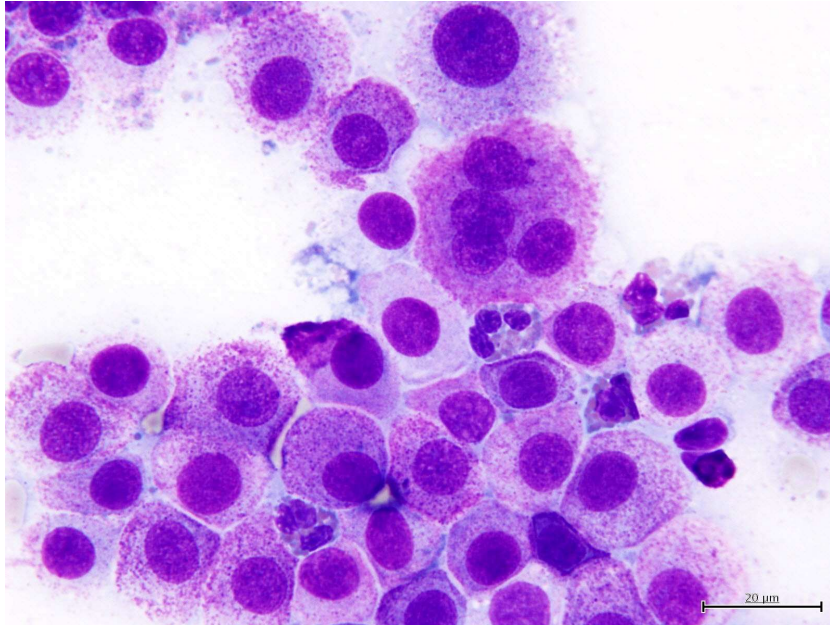


Mastocitoma canino – grau citológico



Veterinary Pathology
 2016, Vol. 53(9) 1171-123
 © The Author(s) 2016
 Reprints and permissions:
sagepub.com/journalsPermissions.nav
 DOI: 10.1177/0898010116638721
<http://vcp.sagepub.com>

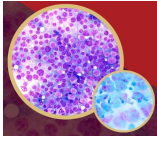
- 32% falsos positivos
- grande variação interobservadores na avaliação dos parâmetros nucleares
- grânulos “mascaram” os núcleos



Mastocitoma felino - clínica

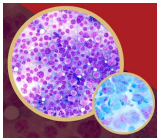
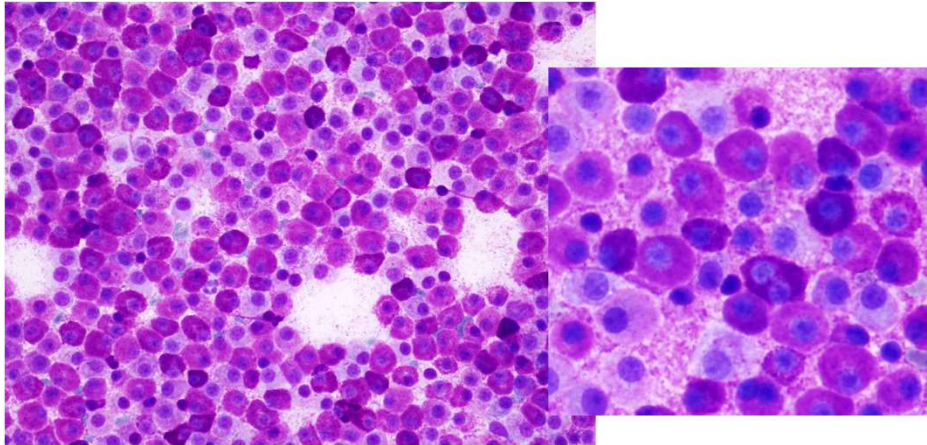
- cutâneo frequentes (21% dos tumores de pele); cabeça e pescoço
- apresentação clínica variável: nódulo único ou múltiplos disseminados ou coalescentes; ulceração possível
- classificação histológica (3 subtipos): mastocítico bem diferenciado, pleomórfico e atípico (gatos Siameses++; descrita regressão espontânea)





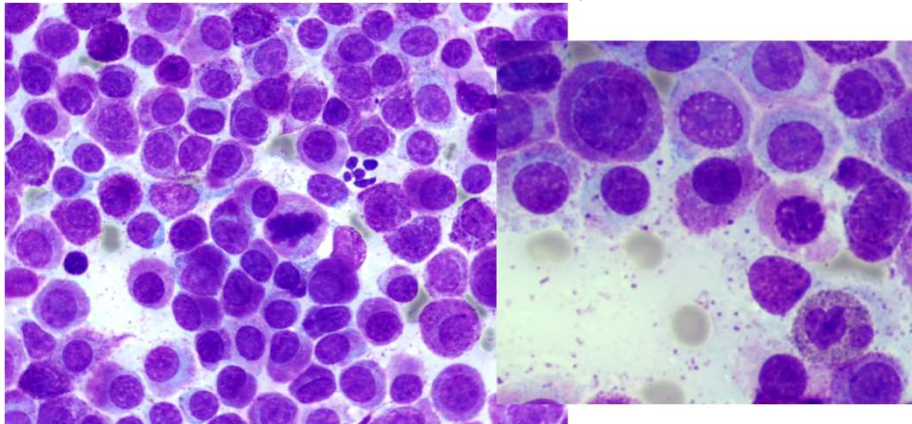
Mastocitoma felino - citologia

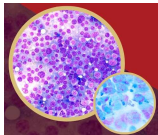
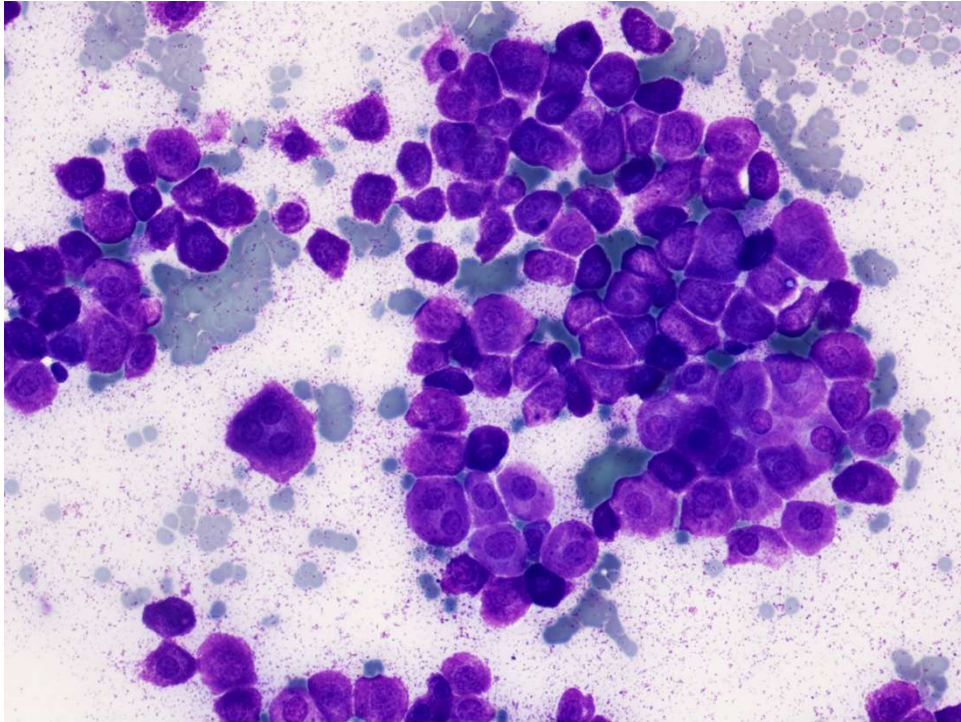
- Mastócitos poligonais (arranjo tipo mosaico)
- Variabilidade de granulação; grânulos mais finos e menos corados do que no cão; mastócitos multinucleados (mesmo nos bem diferenciados)



Mastocitoma felino - citologia

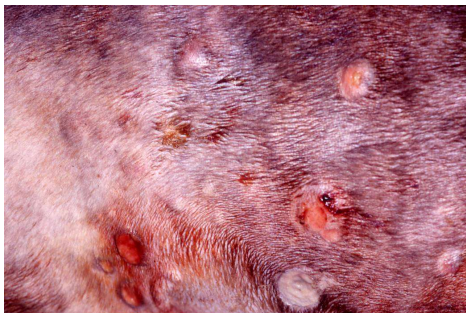
- Pleomórficos - menor granulação e figuras de mitoses
- Atípicos - possibilidade de células sem grânulos e mastócitos com morfologia histiocitária
- Eosinófilos mais raros (+nos atípicos!!)





Linfoma cutâneo

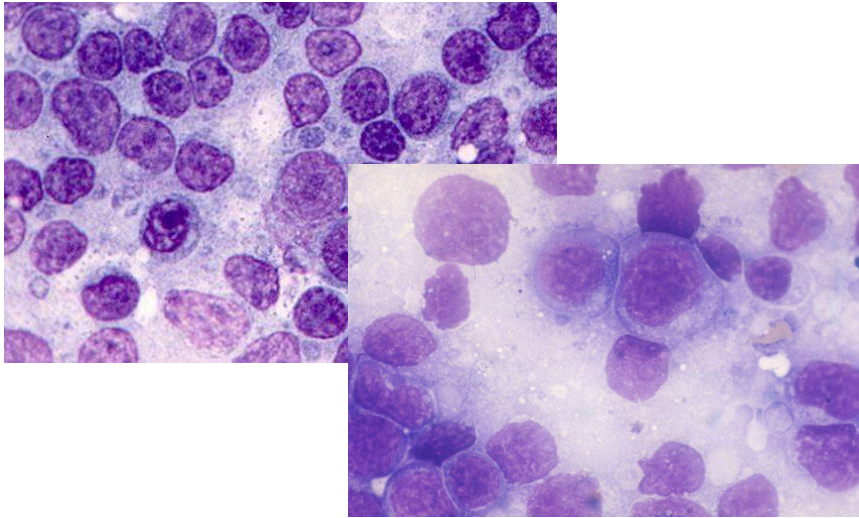
- cutâneo, raro, animais idosos (10 anos)
- macroscopicamente muito variável; epiteliotrópicos ou não-epiteliotrópicos.



- **nódulos/tumores intradérmicos eritematosos e ulcerados**
- **placas com crostas, eritematosas, alopécicas**

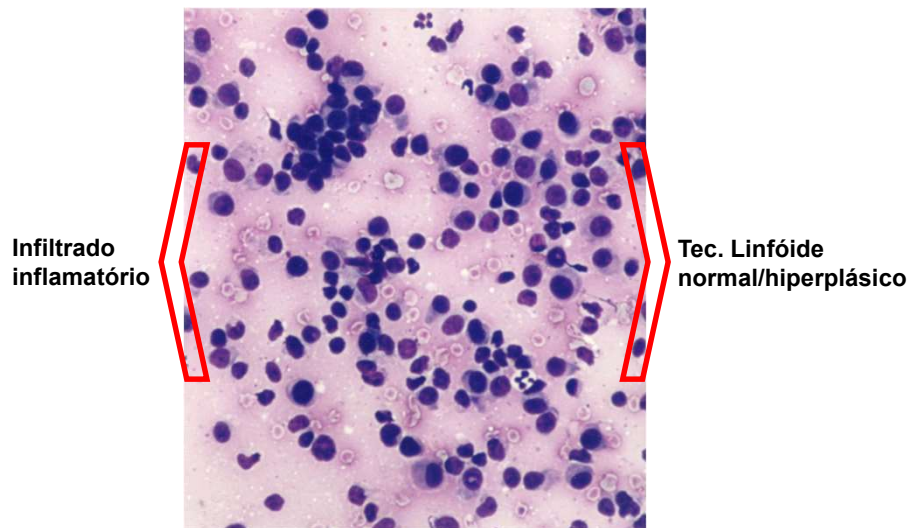


→ Linfoma de grandes/imaturas células



↪ Dx por citologia + fácil

→ Linfoma de pequenas-médias células

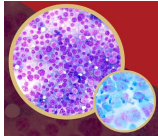
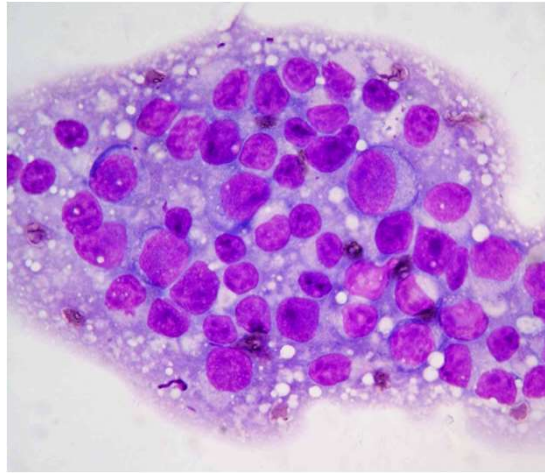


↪ Dx definitivo - histopatologia

→ Linfoma de grandes células

"Minu", Felídeo, macho, 14 anos, não vacinado

- múltiplos nódulos SC e no músculo região do pescoço e lombar
- crescimento em 2 semanas!! Perda de peso, mau estado da pelagem



Tumor venéreo transmissível (TVT)

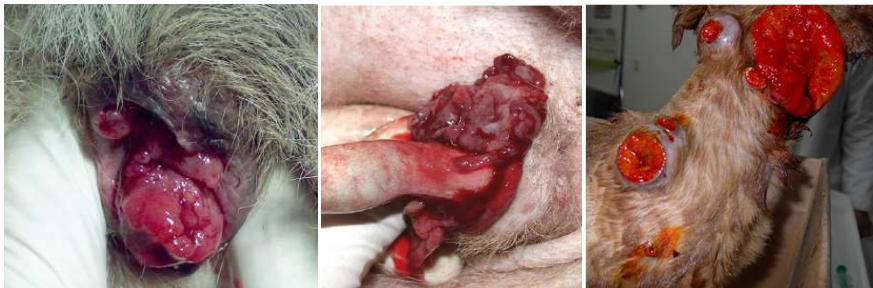
Sarcoma de Sticker

- contagiosa e transmissível no cão
- 1ª na mucosa genital; tb oral, nasal, ocular, anal

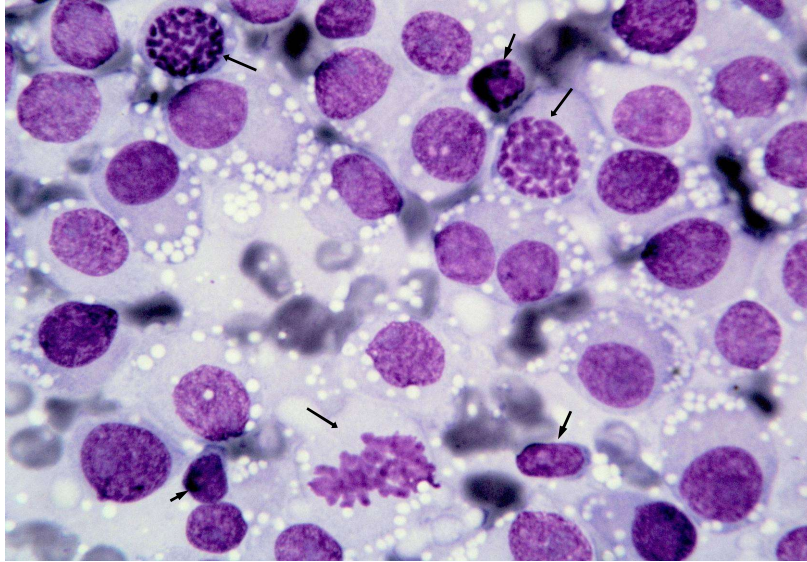
Coito



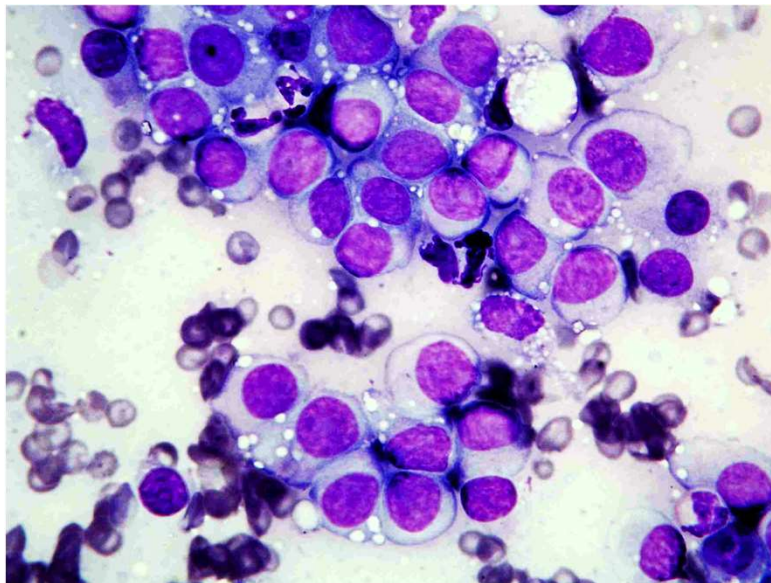
Comportamentos
sociais (lamber, morder,..)

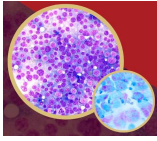


→ TVT



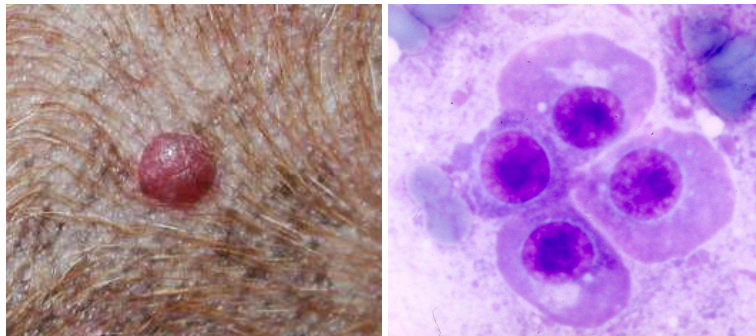
→ TVT





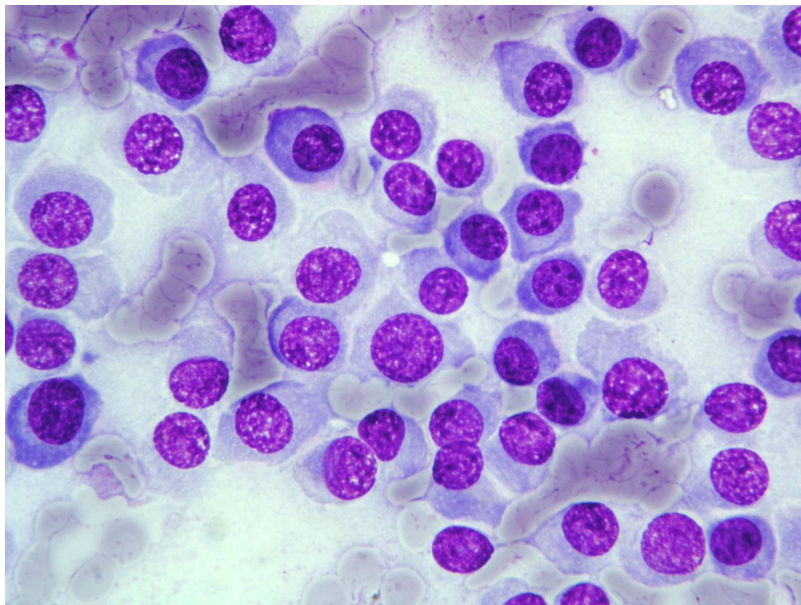
Plasmocitoma (extramedular)

- rara, cães idosos, comportamento benigno
- nódulo alopecico, bem delimitado; **dígitos, lábio, pav. Auricular**; ocasionalmente há descrição de casos de múltiplos plasmocitomas cutâneos
- vários subtipos histológicos – sem relação com prognóstico

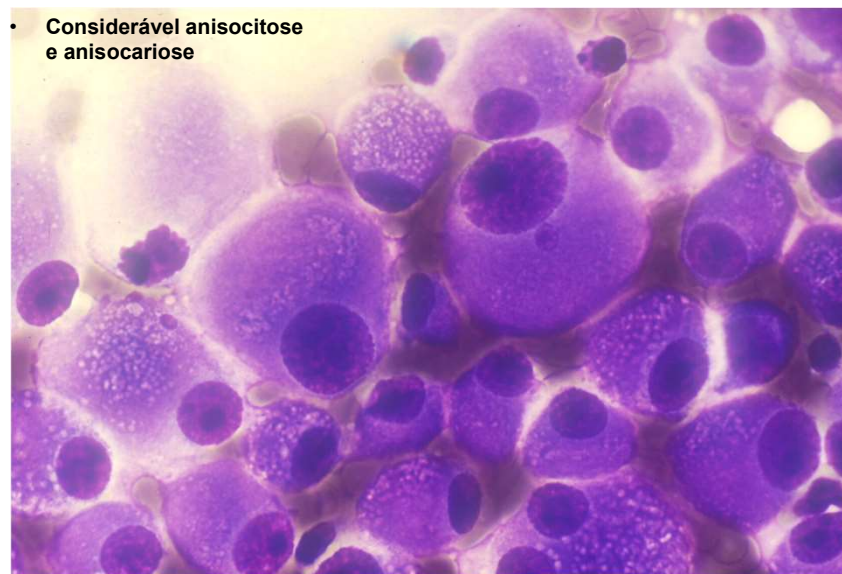


© Springer International Publishing Switzerland 2017

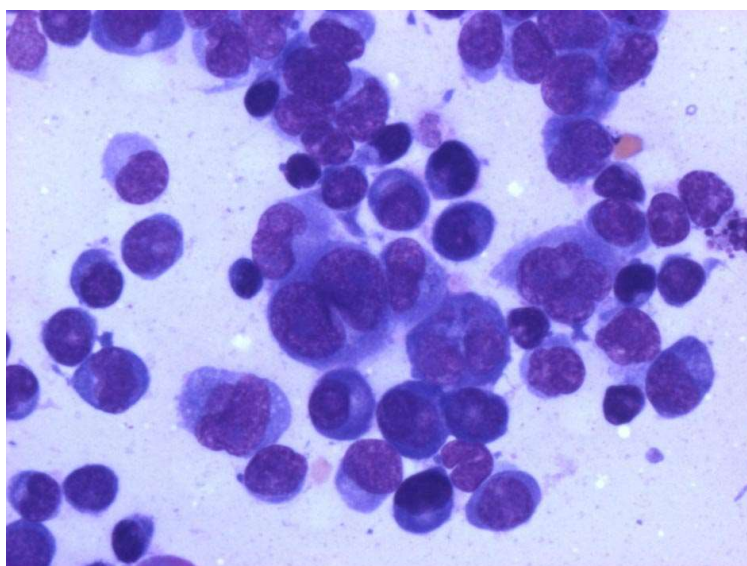
→ Plasmocitoma (bem diferenciado)



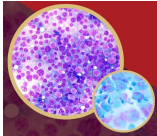
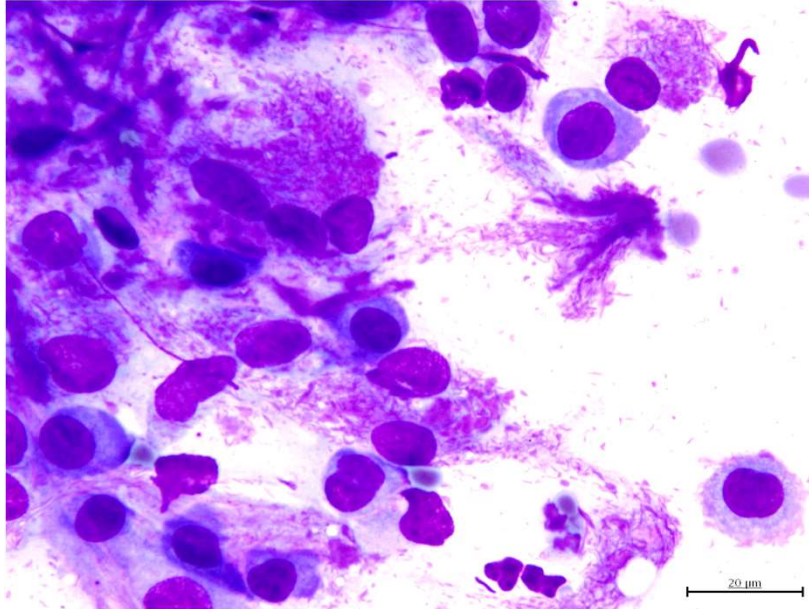
→ Plasmocitoma (pouco diferenciado)



→ Plasmocitoma (indiferenciado)



→ Plasmocitoma (bem diferenciado com amiloide)



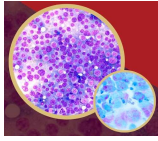
Tumores melanocitários

- 2º alguns autores: podem-se incluir nos “tumores de células redondas”
- pele e mucosas

melanocitoma

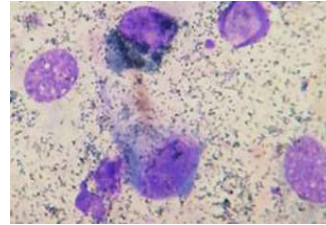
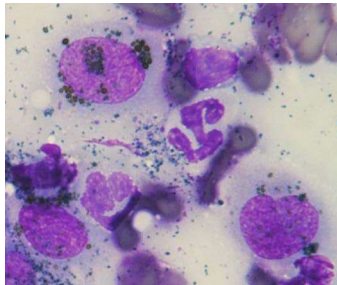
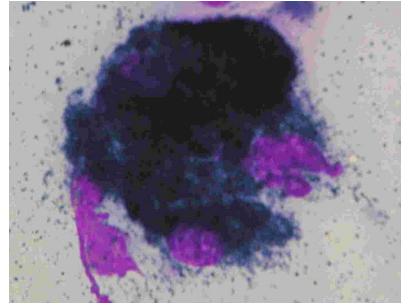
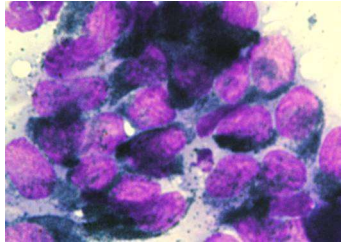


melanoma

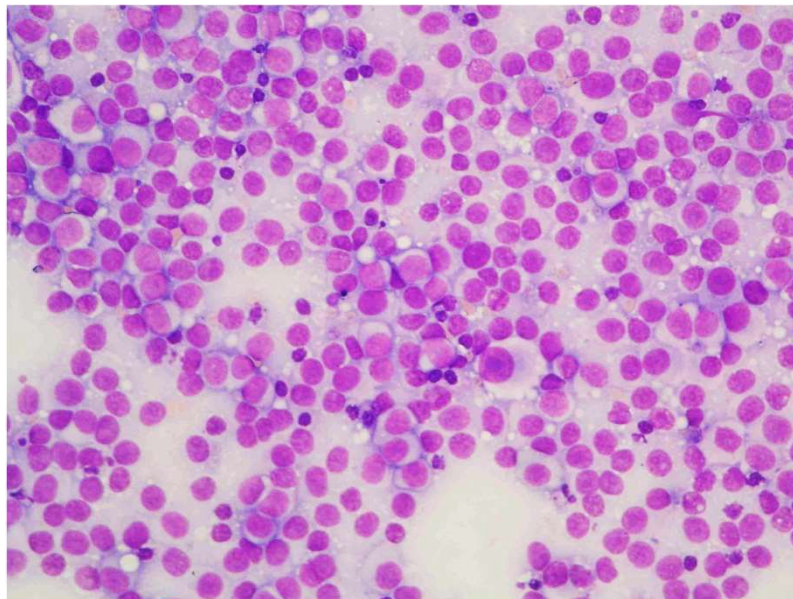


Tumores melanocitários

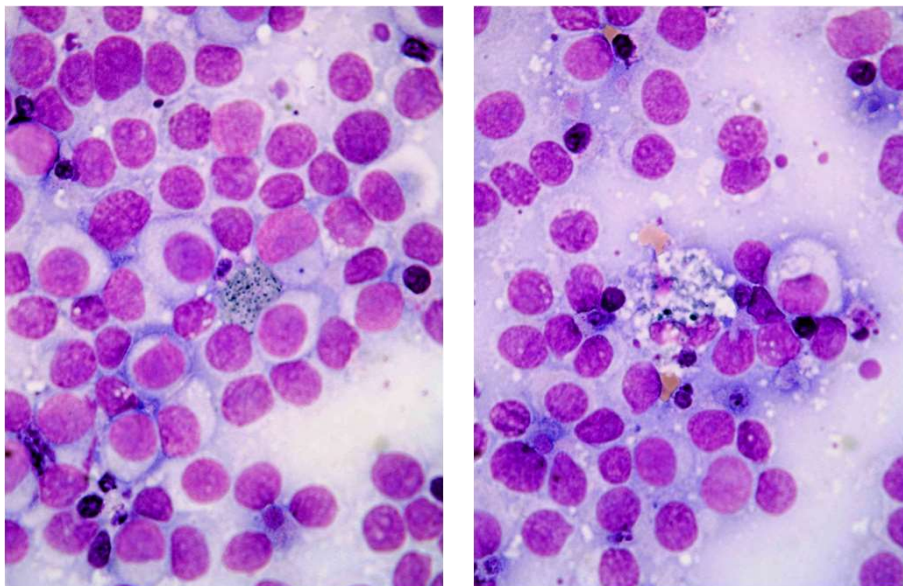
- grânulos de melanina



→ **Melanoma amelanótico** (cão; cavidade oral) – *padrão células redondas*



→ **Melanoma amelanótico** (procurar melanócitos com alguma granulação; importância dos melanomacrófagos)



euvg

Obrigada

Marta Santos

cc **U. PORTO**

 **ICBAS** | INSTITUTO DE CIÊNCIAS
BIOMÉDICAS ABEL SALAZAR
**SCHOOL OF MEDICINE AND
BIOMEDICAL SCIENCES**